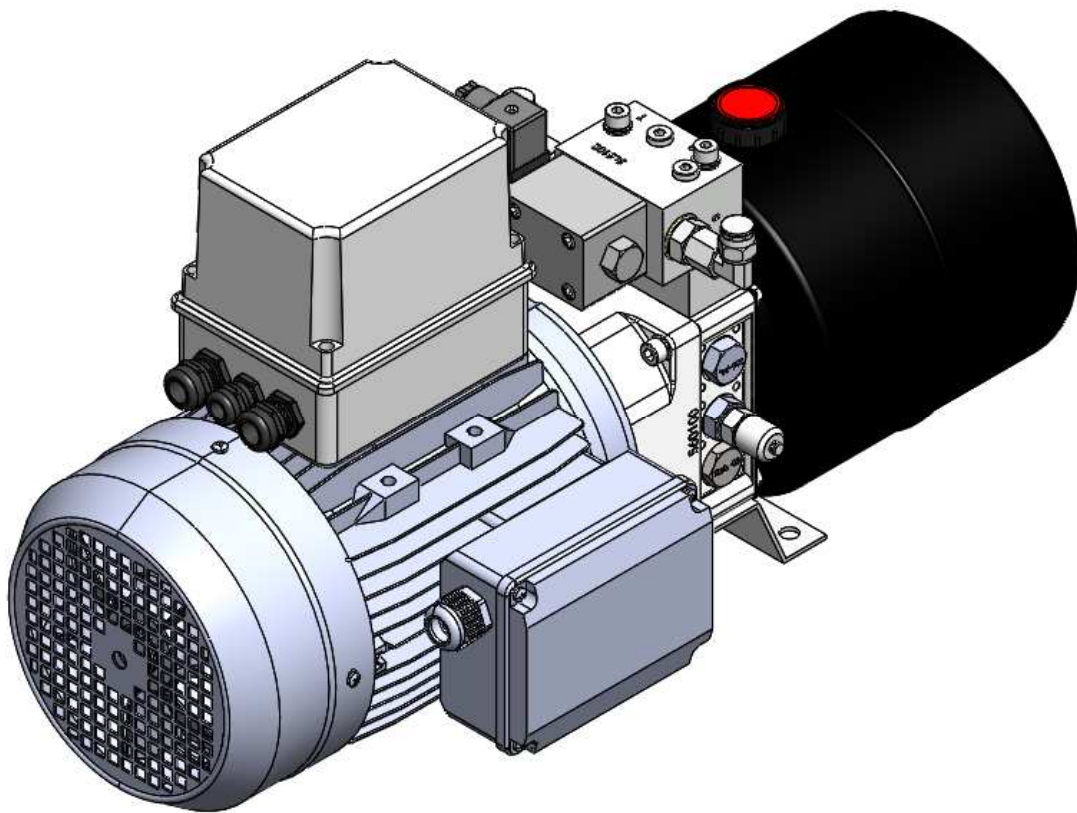




# Hydraulic Power Unit

## CTA1533J

### Installation Manual



## Hydraulic Power Unit - CTA1533J

### Installation Manual



#### Introduction

This manual is written as guidance for the appropriately qualified and trained technicians and not intended as a guide for the layman. This hydraulic system runs at a very high pressure and uses a very high voltage, both of which are potentially very dangerous and if handled inappropriately can cause serious injury or death.

As a minimum ensure the full use of protective eyewear and gloves prior to starting any installation and commissioning.

Keep this manual for future reference .

#### Installation

Prior to Installation ensure that the power unit has all the appropriate safety notices in place and that all componentry is mechanically secured.

When mounting the power unit to the appropriate surface ensure that access is still available to the electrical terminals as well as any parts that may require maintenance to be done on them in the future. The rating for this unit is IP64.

The power unit should be positioned in a location where it is protected from; extreme temperatures, dust, water, condensation and moisture

#### Hydraulic Connections

Ensure that you have the correct hoses with the appropriate connections/fittings for the power unit. Hoses must not be twisted, over tightened, or exceed the bend in the radius. Never use: threads that are different sizes or damaged, brass and cast iron fittings, reusable hose ends, low pressure fittings or repaired hoses

#### Ensure you have the following:

- A flat, level, clean mounting surface
- The approved hydraulic oil as supplied with the power unit
- 4 x M8 fixings to secure the power unit to the appropriate surface.
- Clean hoses to connect the power unit to the pool cover/motor

#### Maintenance/Relevant Information

- Check the power unit regularly to ensure everything is as it should be, ensure that general cleanliness of the equipment and the surrounding area takes places often.
- When mounting the unit to the appropriate surface ensure that access is still available to the hole on the tank, electrical terminals and valves.
- Check the filter often and replace it if necessary to prevent excess build up of debris which could lead up to contamination or slowing down the flowrate of oil to the hydraulic appliance
- Hoses and fittings may wear away over time and become damaged. Replace to ensure power unit runs smoothly and prevent risking the health of the operator/surrounding people
- Change oil every 12 months in heavily contaminated environments. Ensure that the same oil is used to top up the power unit as the current oil in the tank to avoid cross contamination which could lead to changes in the physical and operational characteristics of the mixture.

## Hydraulic Power Unit - CTA1533J

### Installation Manual



#### Electric Motor

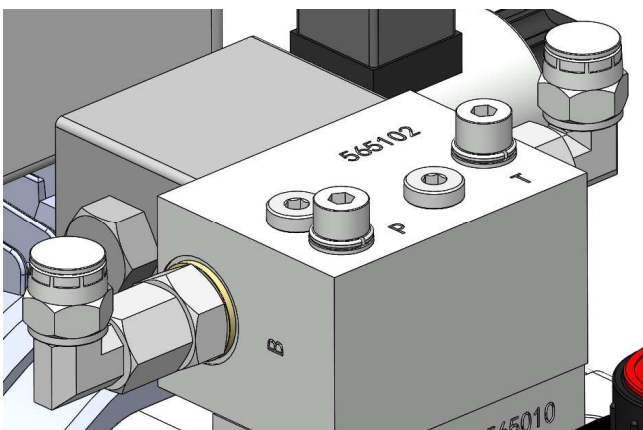
Check that the motor has the relevant health and safety information in place with an arrow pointing in the anti clockwise direction. To avoid the power unit suffering a voltage drop, ensure the motor is wired up with the correct wire type and size based on the information given in the table below.

Part Number	300113
Output	2.2Kw
Voltage	230V
Rotation speed	1390RPM
Full Load Current	12.64
Protection	IP 55
Efficiency	IE2
Insulation class	F
Duty Cycle	S1
Phase	Single

#### Installation Process

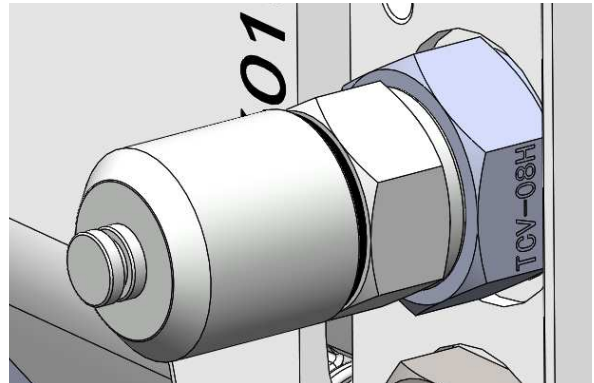
##### Connecting the hoses

Before connecting the hoses, remove the blanking caps from the elbows. Connect the fitting of the hydraulic hose to one of the 9/16 JIC elbows on the pack. Repeat this process with another hose on the other side, the block should be stamped 'A' and 'B' for reference.



##### Connecting a pressure gauge

Before unscrewing and removing the cap of the test point ensure that the power unit is not running. Secure the female threads of the pressure gauge to the male threads of the test point



##### Setting the pressure

To set up the power units hydraulic pressure, operate the pool cover switch in the COVER ON direction and turn the hexagon screw on the relief valve clockwise in ½ turn increments until the cover runs smoothly, then one last ½ turn of the hexagon screw to complete the set up. To fix this screw in position, tighten the locknut.

The cover should always be setup in the COVER ON direction as this requires a higher pressure from the power unit than the in the COVER OFF direction. Check the pressure on the test gauge for recording purposes.

The maximum pressure on the test gauge should not exceed 90 bar

##### Filling the tank

Remove the red plug from the tank and fill to the top line of the dip stick. Depending on the length of the hoses, you will need to top this up. Approx. ½ litre per 7M of hose. Do not let the pump run dry.

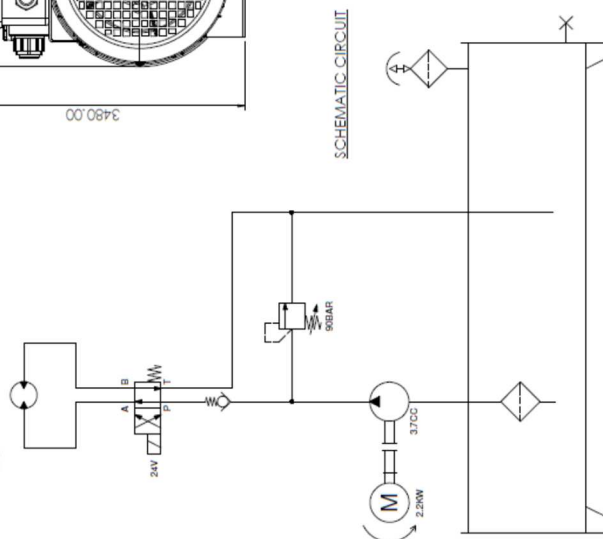
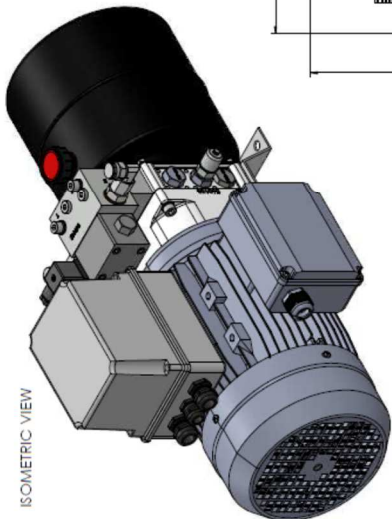
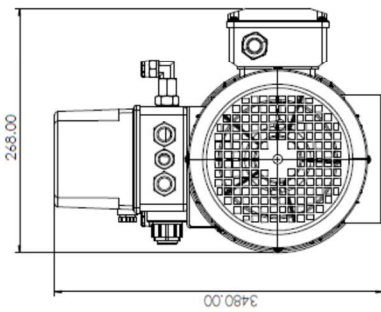
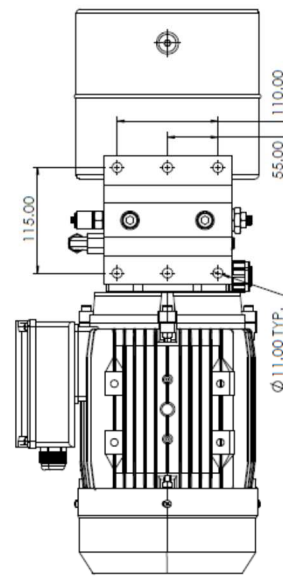
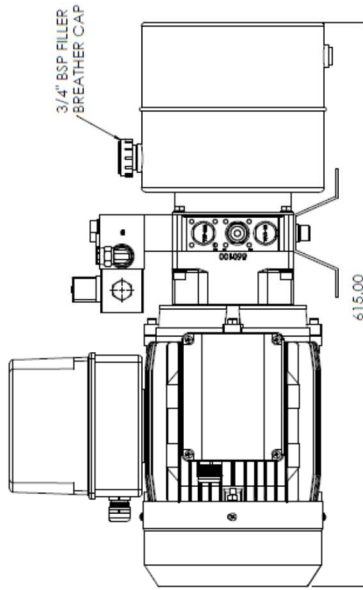
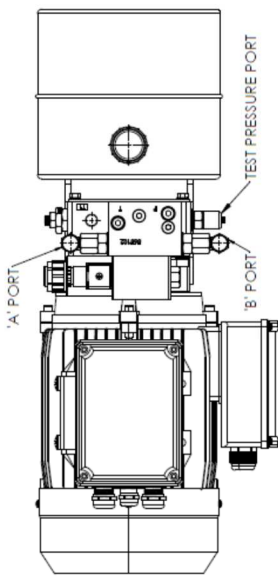
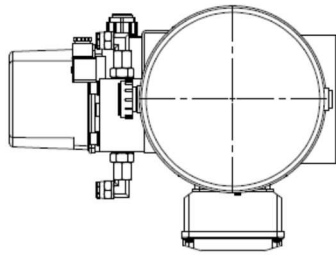
# Hydraulic Power Unit - CTA1533J

## Installation Manual

### Technical Drawing



MOTOR SIZE - 2.2KW  
TANK SIZE - 5L  
PUMP SIZE - 3.7CC  
FLOW RATE - 5.14LPM  
PRESSURE SET TO - 90BAR  
TEST PRESSURE - 150BAR

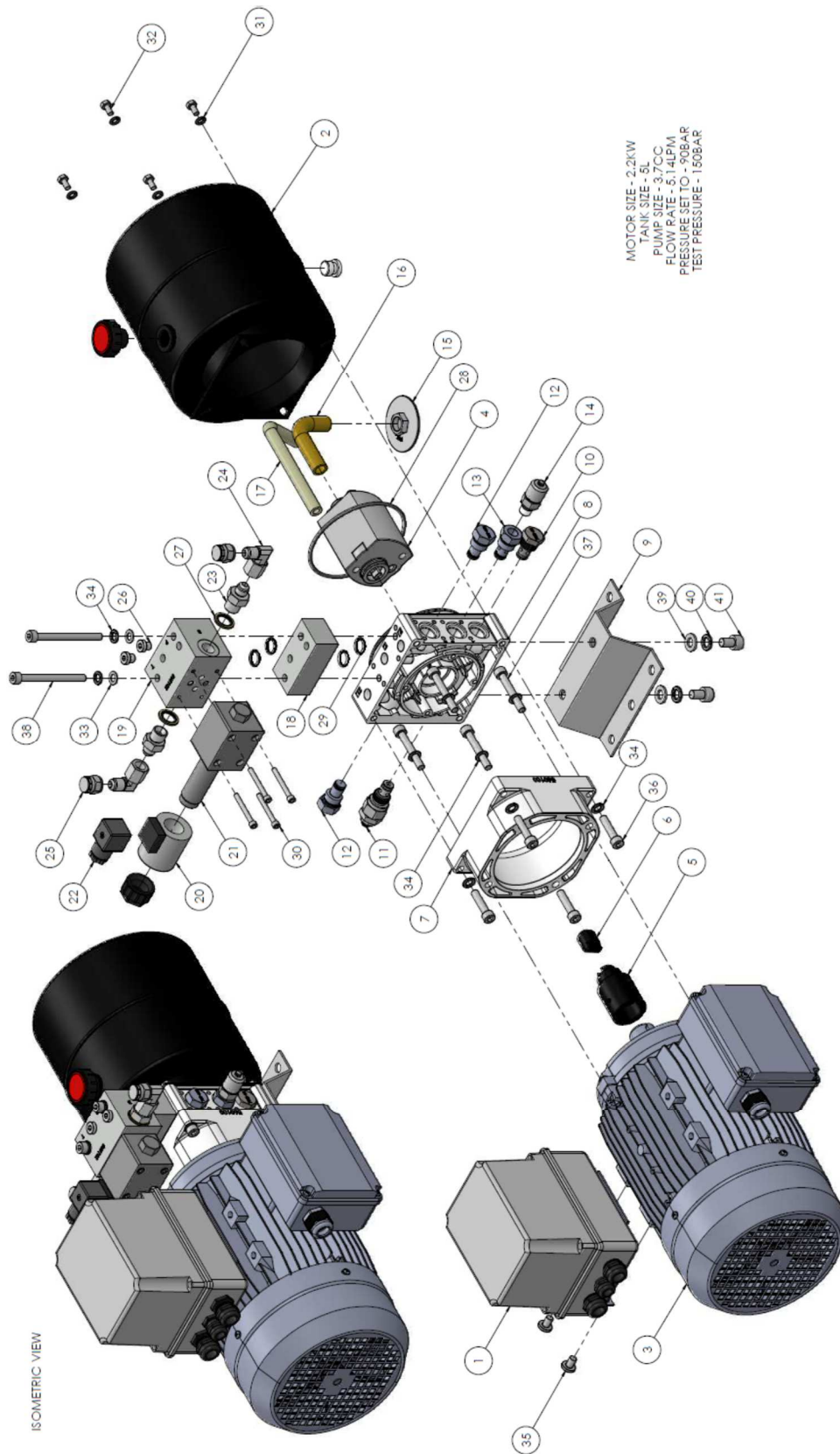


# Hydraulic Power Unit - CTA1533J

## Installation Manual



### Technical Drawing - (Exploded View)





# Hydraulic Power Unit - CTA1533J

## Installation Manual



### Connecting the Key Switch (CTA0828J) to control box of the power unit (CTA1533J)

