



On-Site Lining

**Certikin**  
FLUIDRA



Certikin's Infinite On-Site Lining service continues to go from strength to strength in terms of level of service and installation ability and the depth of quality in the materials we use.



Now firmly established in this market, Certikin's ability to install a liner into almost any pool and any environment speaks for itself, with a wide variety of installations successfully completed – from basic balance tanks, standard and complex domestic pools, through to full commercial size installations.

Our material range continues to increase and is of the highest quality. Our supply partners are some of the finest PVC manufacturers in the world and continue to excel themselves in terms of development and quality standards. All materials sourced are certified for use in domestic and commercial applications – being KSW and CE certified they meet all current European requirements for swimming pool installation. All of our anti-slip membranes, plain colour or printed, are manufactured to DIN EN 51097 Cat C standards..

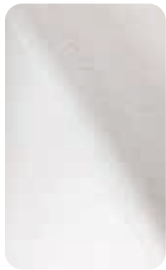
#### Features:

- Installed by Certikin
- Fully certified materials
- High quality printing with a multiple lacquered protective surface – offering the highest stain, discolouration and abrasion resistance
- UV Stabilised – acceleration chamber tested
- Ideal for both new and re-furbished pools, including concrete, cement render, steel, aluminium, timber and fibreglass – note: fittings must be liner fittings
- Anti-slip options are available please call to discuss further
- Anti-microbially equipped
- Tear resistant
- Sealed with colour co-ordinated or translucent liquid PVC
- Suitable for domestic and commercial applications

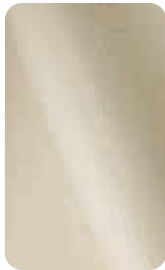
Do It Yourself? If you have the skills to install yourself, contact The Liners and Covers Division for pricing of vinyl and accessories.

## Renolit Relief Range

- Cat C DIN Standard
- 1.8mm thick



White



Sand



Light Blue



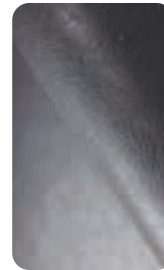
Adriatic Blue



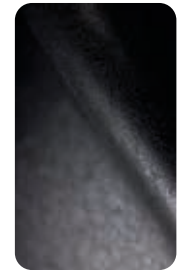
Caribbean  
Green



Light Grey



Dark Grey



Black

## Renolit Tiled Range

- Cat C DIN Standard
- 2mm thick



Quartz (grey)



Jade (green)

## Renolit Alive Range



Chandra (1.65mm)



Dhyana (1.65mm)



Prana (1.65mm)



Bhumi (1.65mm)

## Renolit Alkorplan Evolve

- Cat C DIN Standard
- Thickness 2 mm



Ashen



Verdant



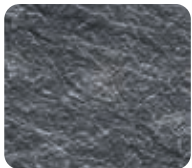
Dune

## Renolit Touch

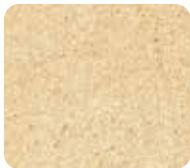
The Touch range of vinyl has been designed to simulate a variety of natural stone effects, both in appearance and texture. At 2mm, this high-quality vinyl is thicker than standard vinyl available on the market and is manufactured using the latest technology which incorporates printing, embossing and engraving.

The texture of the Authentic and the new Vanity designs allow them to be certified as an anti-slip product to Cat C of the required DIN standard, and the Elegance design has its own complementary anti-slip option which also meets the standard. All Touch vinyls are ultimately protected by the Alkorplan 3000 multi-layer lacquering system for maximum protection within the pool environment.

- Cat C DIN Standard.
- Thickness 2 mm



Elegance



Relax



Vanity



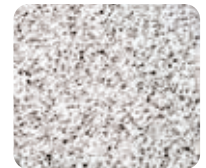
Authentic



Sublime



Prestige



Origin

## Vogue by Renolit

If you are looking for comfort and design in your home, why don't you do it in your pool as well? Available in 3 luxurious textures, this 2 mm reinforced laminate is printed and inspired by interior design and trends, with the same properties as the TOUCH range.

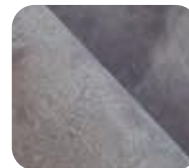
- Cat C DIN Standard.
- Thickness 2 mm, Width 1,65 m, Length 25 m



Vogue Tropical



Vogue Summer



Vogue Urban



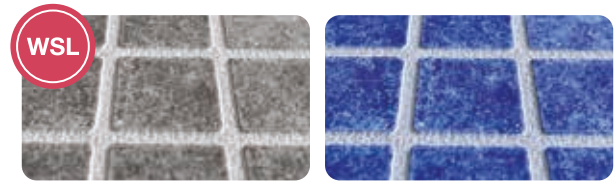
Vogue Vintage

## Ceramics by Renolit

Renolit Alkorplan Ceramics is a range of reinforced membrane, with the appearance of ceramic mosaic inspired by Greek mythology.

Thicker than a traditional membrane in order to achieve the relief, Ceramics is one of most resistant, impermeable and lasting liners on the market.

- Thickness 2 mm
- Unique designs to give the look and feel of ceramic mosaic tiles
- All the usual benefits of standard on site lining vinyl
- Textures of each design comply with Cat C of the required DIN standard for anti-slip, meaning the vinyl can be used on all surfaces



Etna

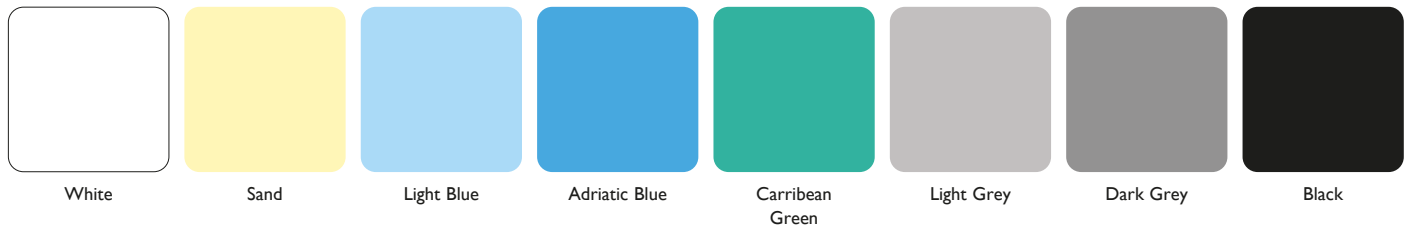
Atenea

## Renolit Plain 2000 Collection

Plain, solid colours are ideal for creating an all over crisp finish. They can be combined with patterns around the perimeter, walls and floor if desired to create contrast and differentiation. Whilst solid colours are clean and even, they can highlight unevenness in the pool shell in some instances.

Our extensive range of colours offers the widest choice and the highest quality. All plain colours are available in matching anti-slip variants – these can be used to complement the all over colour of your liner, or mixed with patterns and other colours to create areas of contrast on step treads, slopes, ledges and other safety areas.

- Thickness 1.5 mm



White

Sand

Light Blue

Adriatic Blue

Carribbean  
Green

Light Grey

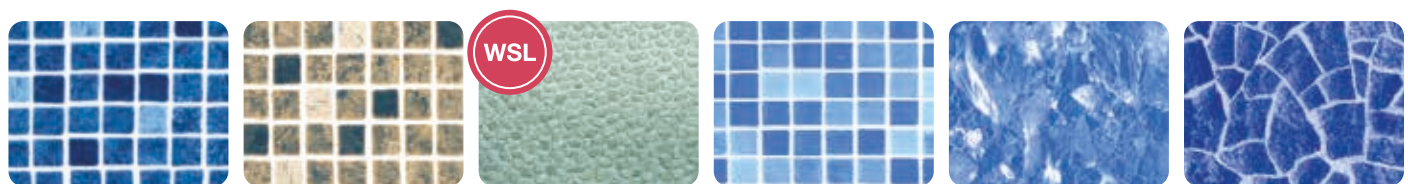
Dark Grey

Black

## Renolit Pattern 3000 Collection

Consideration should be given to which pattern is chosen. Regular repeat patterns such as mosaics create a high impact look, but are not always suitable for curved or awkward shaped pools where the run of tiles can conflict. Random patterns such as marbles and broken mosaics create an all over moving water effect when filled.

- Thickness 1.5 mm
- Slip resistance version available in a Renolit Alkorplan Relief



Persia Blue

Persia Sand

Platinum (special order)

Bysance Blue

Blue Marble

Carrara

## CGT Aquasense

The refined and durable Aquasense embossed collection recreates a level of natural beauty and elegance that captures all of your senses.

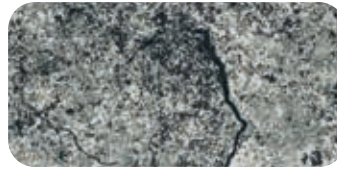
- Cat C DIN Standard
- Thickness 1.8mm, Width 1.65m Roll Length 21m
- \*All are Special Order



Black Slate



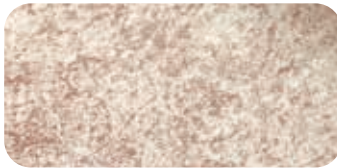
Granit Green



Granit Grey



Granit Blue



Granit Sand



Golden Riviera



White Riviera



Calacatta Marble

## CGT Aquasense Signature

- Cat C DIN Standard
- Thickness 1.8mm
- \*All are Special Order



Fidji Green



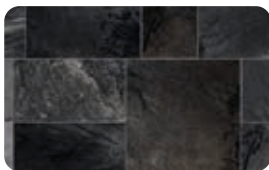
Fidji Vintage Grey



Fidji Brown Sand



Fidji French Coast



Brown Basalt



Granit Gold\*



Imperial Green



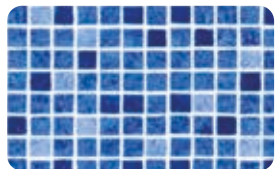
Imperial Grey



Imperial Sand

# CGT Aquadecor

- Thickness 1.5mm



Cyrus Blue



Cyrus Santorini



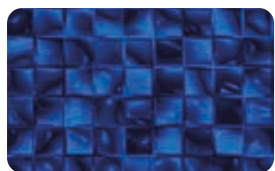
Cyrus Sand



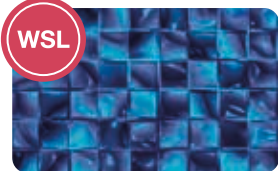
Skyline Pearl



Plaza



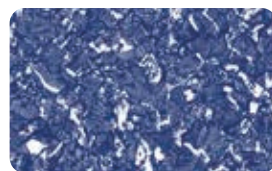
Jellistone Blue Pearl



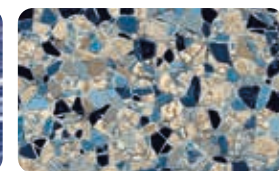
Jellistone Green Pearl



Oceanstone



Sparkle



Butterfly Pearl



# Certikin

FLUIDRA

[www.certikin.co.uk](http://www.certikin.co.uk)



Contact your Certikin stockist for prices and availability.

This literature is intended as a guide.  
The company reserves the right to change the specifications without notice.