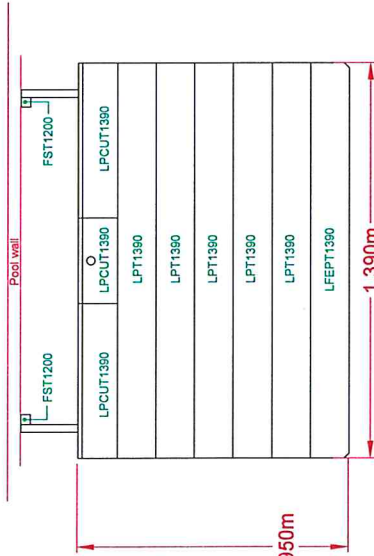


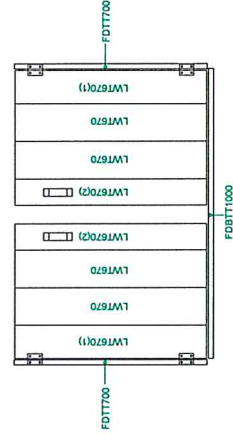
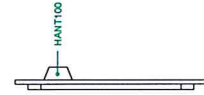
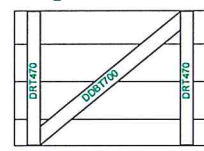
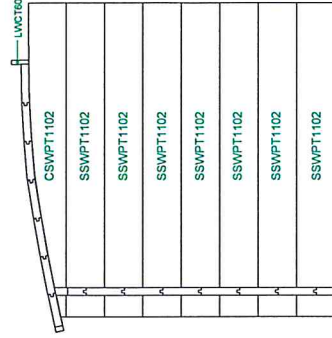
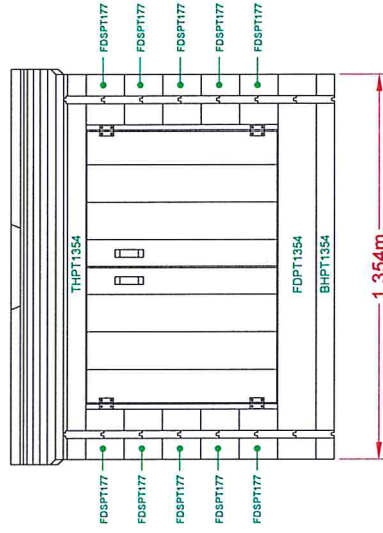
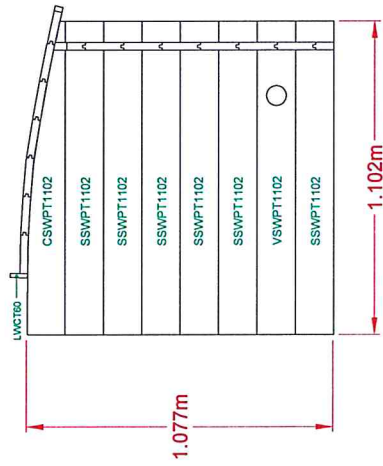
Fixing kit

- SCR086 - Screw 3.5mm x 20mm countersunk.
- SCR096 - Screw 5mm x 100mm countersunk.
- SCR097 - Screw 4.5mm x 50mm countersunk.
- SCR098 - Screw 4.5mm x 32mm countersunk.

Drawing layout to suit:  
Exercise Pool  
Knightsbridge Pool

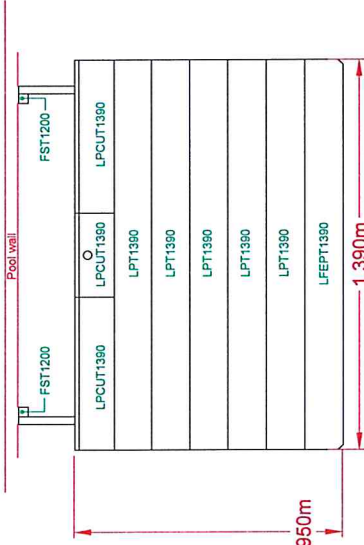


Items not noted on this plan is:  
LST1150: This supports the skimmer lid  
(LPCUT1390)  
DSBT150: Door Stay Blocks



Fixing kit

- SCR086 - Screw 3.5mm x 20mm countersunk.
- SCR096 - Screw 5mm x 100mm countersunk.
- SCR097 - Screw 4.5mm x 50mm countersunk.
- SCR098 - Screw 4.5mm x 32mm countersunk.



Items not noted on this plan is:  
 LST1150: This supports the skimmer lid  
 (LPCUT1390)  
 DSBT150: Door Stay Blocks

Drawing layout to suit:  
 Richmond Pool  
 Mayfair Pool  
 Kensington Pool  
 Belgravia Pool  
 Bayswater Pool  
 Westminster Pool  
 Regents Pool

