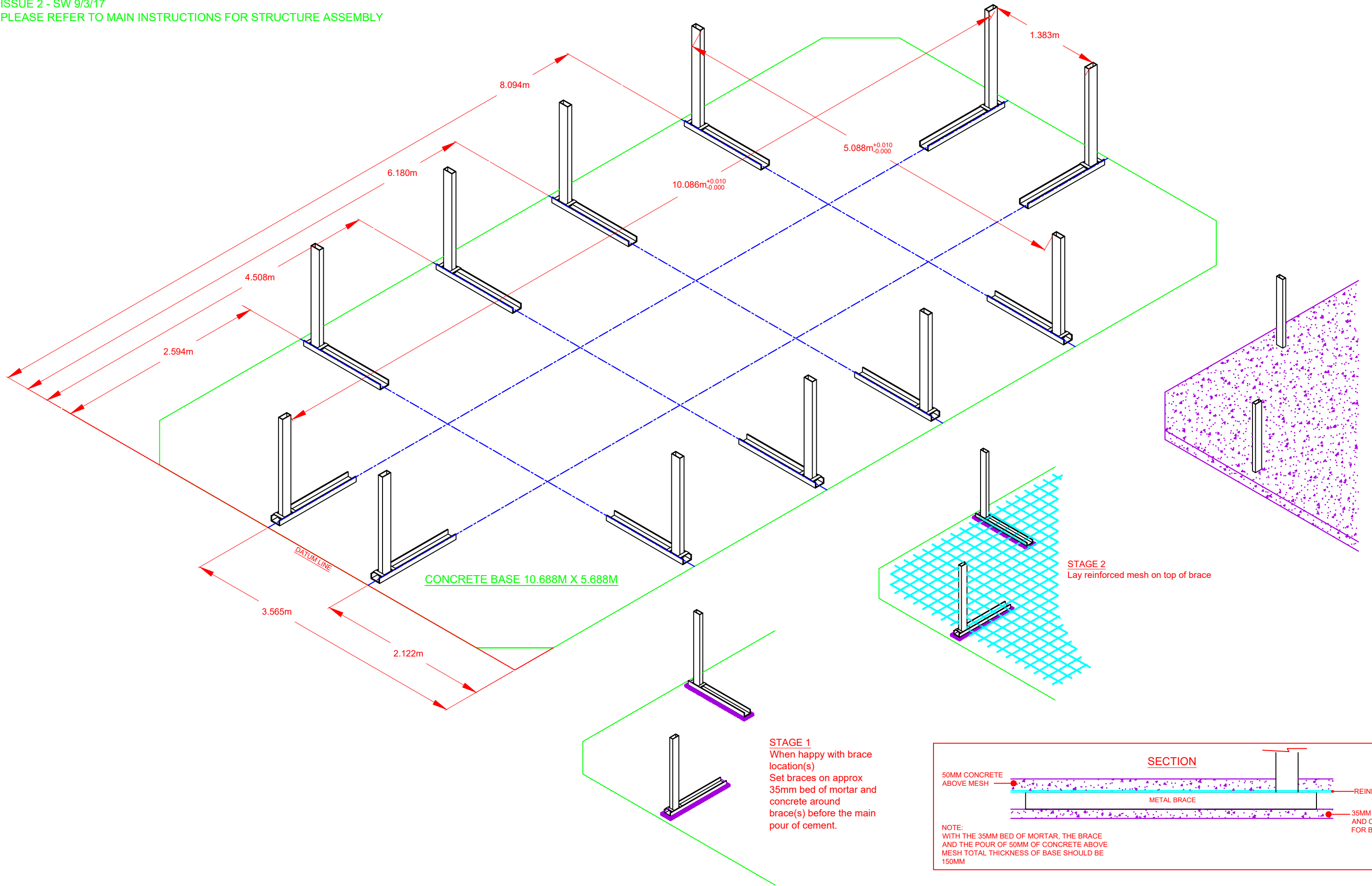


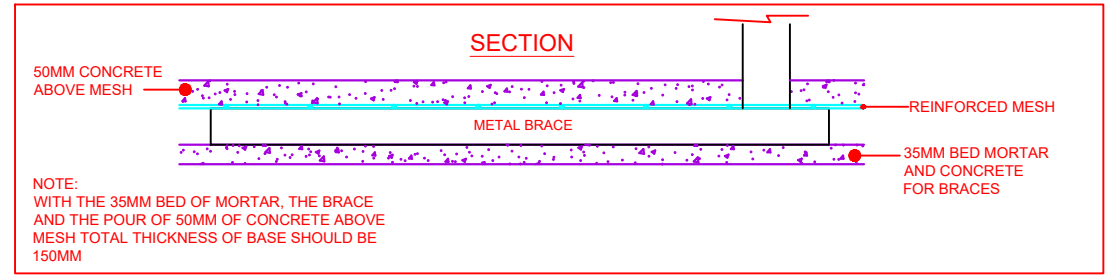
BASE LAYOUT DETAILS FOR CHELSEA WOODEN POOL  
 ISSUE 2 - SW 9/3/17  
 PLEASE REFER TO MAIN INSTRUCTIONS FOR STRUCTURE ASSEMBLY



**STAGE 3**  
 When mesh is in position pour concrete into excavation to cover mesh by 50mm minimum.

**STAGE 2**  
 Lay reinforced mesh on top of brace

**STAGE 1**  
 When happy with brace location(s) Set braces on approx 35mm bed of mortar and concrete around brace(s) before the main pour of cement.



CONCRETE BASE 10.688M X 5.688M

DATUM LINE