



COVERSTAR

Coverstar Automatic Safety Covers

Innovation, Performance & Reliability

Exclusively distributed by Certikin in UK

Compliant with French Safety Standard NFP90-308

Certikin
FLUIDRA



Your swimming pool is a great source of family fun! But when it comes to children and pets, it is also the source of safety concerns. A Coverstar safety cover is by far the best solution for preventing children and pets from entering the pool. Fully automatic, the Coverstar is the best protection available for your family and your pool investment!

Benefits to the homeowner

- Provides a safe environment for your family
- Saves on heating costs by as much as 70%
- Saves on water by as much as 90% (reduces evaporation)
- Saves on chemical consumption by as much as 70%
- Fully automatic (no manual labour involved with pulling cover on and off pool)
- Completes your pool with an aesthetically pleasing finish

Coverstar fabric - heat sealed webbing for double strength

Most automatic cover manufacturers use sewn webbing. With this method, the webbing often fails before the fabric does.

Coverstar, however, use an exclusive, patented process to heat seal the webbing around a polymer bead and weld it to the cover in one step. This heat sealed webbing is colour matched to the fabric to create an attractive finish. Independent lab tests show Coverstar's heat sealed webbing is more than twice as strong as competitive webbing sewn to a cover.

Furthermore, rather than use industry standard vinyl for the cover, which is popular with other manufacturers, Coverstar use the far superior Ultra Guard III vinyl composite.

The high level of UV resistance offered with the Ultra Guard III will reduce the level of colour fading considerably, compared to standard vinyl, plus it offers high resistance to chlorine, acid, ozone and other pool chemicals.

Coverstar's Ultra Guard III fabric with colour matched heat sealed webbing has a 7 year warranty (first 3 years is 100%, followed by remaining 4 years pro-rata) and is available in a range of colours.

Coverstar mechanism - engineered for unmatched reliability

Engineered with extreme precision, the Coverstar mechanism is built on strength. The sliders are more than four times stronger than any other used in the industry. The exclusive heavy duty double ball bearing pulleys have almost triple the load bearing capacity of single row pulleys used by other manufacturers. No sheer pins or bolts are used, instead the system operates with key-ways to provide maximum reliability.

Coverstar's mechanism has a 20 year manufacturer's warranty.

Powerflex diamond braid ropes

Coverstar's Powerflex Diamond Braid Ropes behave like a shock absorber. They are self-adjusting during operation for a more reliable performance, which negates the need for a compensator.

The Diamond Braid Ropes are the only ropes to come with a 2 year no-break warranty.

Hydraulic power pack (UKCA compliant)

Specially designed and assembled in the UK with a compact design and incorporating auto bypass valve protection, preventing over-running of the cover and prolonging life expectancy of the cover, rope and system.

Colour options available:



Due to limitations in the printing process the colours above may vary slightly and are for guidance only.



Variety of installations available

Suitable for both outdoor and indoor swimming pools, new build and existing, the Coverstar automatic safety cover can be supplied for many different types of installations.

Under coping (encapsulated) guide

This option is by far the neatest finish for rectangular pools. Guides to suit concrete/ tile and liner pools are available. The liner version incorporates a liner-lock extrusion, negating the need to fit a separate liner-lock.

The Coverstar guides can be built onto the swimming pool wall while it is under construction. The guide is virtually hidden.

The roller and mechanism are then recessed into a dry pit and can be covered with an aluminium flat lid, trays (in which to carry coping stones to continue the pool surround at the roller end), or composite decking.



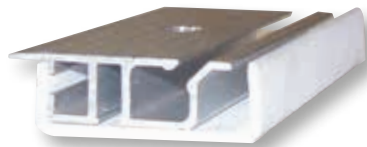
Encapsulated Under Guide Track to suit liner pools

Encapsulated Under Guide Track to suit tiled pools

To complete the look, a low profile leading edge bar is also included, which can be exposed or fabric wrapped.

Should you wish to completely conceal the leading edge bar altogether, this can be offered with the majority of installations. Please check with your supplier, as preparation work to the pool and pit are required.

Top guide or flush guide with deck mount roller



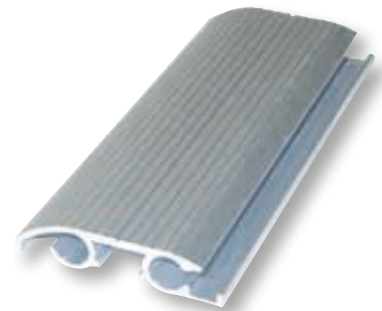
This is a fully deck mount system and is ideal for existing pools or when refurbishing your pool. Also this option is the perfect solution for covering shaped pools or pools with a step bays. However, careful consideration must be taken with regards to potential deck drag. Your supplier can offer advice with this.

As this deck mount system is fitted retrospectively, there are no alterations needed to the pool surround, providing it is solid and level.

The mechanism and guides are secured to the deck surround of your pool. The mechanisms at each end of the roller can be covered with two white fibreglass housings.

Top guide or flush guide with recessed pit mount roller

This type of install lends itself nicely to existing pools or shaped pools. A dry pit is constructed behind the pool in which to recess the roller and mechanism, creating a neat appearance. An aluminium pit lid can be supplied and this allows access to the roller and mechanism.



Site requirements/preparation

Deck mounted systems

- The mechanism and guides need to be set square to the pool and create a pure rectangle
- The guides must extend past the end of the pool by a minimum of 18" (457mm) to allow a good overlap of the cover
- The mechanisms/roller should be set back 18" (457mm) from the front of the pool to limit any cover drag over the deck. In special cases the roller can be set back further. Please check with your Coverstar dealer
- The motor end mechanism will extend 30" (762mm) from the inside of the guide at the motor end. The non-motor end mechanism will extend 10" (254mm) from the inside of the guide at the non-motor end
- Top-guides are 2.5" (64mm) wide and 0.5" (13mm) high
- The leading edge beam will need a clear space of 6" (152mm) above deck level in order to travel the length of the pool cleanly

Flush recessed top-guide systems

As with the deck mounted systems but with the following additional requirements for the pit.

- On covers up to 40' (12.2m) a pit 14" (356mm) wide x 14" (356mm) deep must be constructed. For larger covers please call your Coverstar dealer for further details
- The motor end of the pit needs to extend a minimum of 30" (762mm) from the inside of the guide. At the non-motor end the pit should extend at least 10" (254mm) from the inside of the guide

Under-guide systems

- The pool must be a pure rectangle. Concrete pools must have square corners. For liner pools radius corners can be accommodated
- On covers up to 40' (12.2m) a pit 14" (356mm) wide x 14" (356mm) deep must be constructed. For larger covers please call your Coverstar dealer for further details
- The motor end of the pit should extend 30" (762mm) from the pool wall. The non-motor end of the pit should extend 10" (254mm) from the pool wall
- Encapsulated guides should be installed during construction of the pool and can be supplied 'up front' if required

Less time cleaning . . . more time enjoying

A Coverstar automatic cover keeps dirt and debris out of your pool. Time spent cleaning out dirt and leaves and adding new chemicals is vastly reduced.





What's included

- Ultra Guard III fabric with colour matched heat sealed webbing and diamond braid ropes
- Guides
- Pulleys, sliders and bump stops
- Roller
- Leading edge
- Complete drive mechanism
- UKCA compliant Hydraulic power pack complete with hoses and oil
- Touch button key switch for operating the cover (mounted so that both ends of pool are visible from key switch)
- Pit brackets (if applicable)
- Pit lid of your choice (if applicable)
- Deck mount grey fibreglass housings for mechanisms (if applicable)
- Submersible cover pump (to be placed on closed cover, to draw off excess rain water)
- Homeowner's guide to safe operation and maintenance of the Coverstar

Frequently asked questions

Many queries are raised before and after the installation of any cover, as is natural with a large project. Some of these are addressed in advance below.

Slack in the cover material

All fabric covers, such as the Coverstar, are manufactured with a quantity of slack relevant to the pool size and style of cover system. There are several reasons for this.

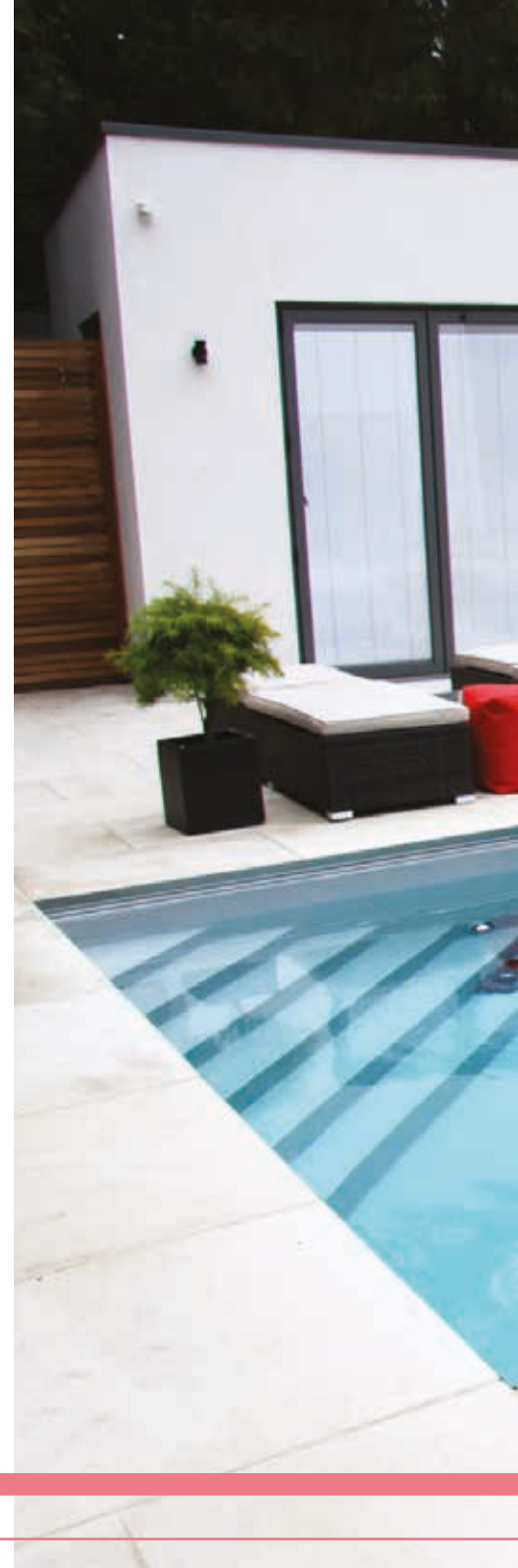
1. A cover that is too tight will pull against the tracks and will not operate properly. A cover that is made too small reduces the life of the cover and mechanism, causing premature failure of both the fabric and the mechanism due to the added stress.
2. All fabric shrinks over a period of time. The amount of the shrinkage varies widely according to the type of fabric, how the fabric is manufactured, the temperature of the water, and the weather conditions. Slack is added to the fabric to compensate for fabric shrinkage.
3. The cover must lie on the water in order to be safe. Most of the supporting strength of the cover comes from the support of the water directly under it.


The slack addition calculation is designed to give the cover and mechanism maximum life, as well as making the cover look as attractive as possible. Each cover will have some folds and wrinkles visible when it is closed.

Does the system require maintenance?

Yes. Basically keep it clean and running smoothly. Wash the cover every 6 months with a non-detergent soap. Clean all rotating surfaces by spraying with water every 6 months, this keeps them free of dirt and debris which may cause clogging.

It is imperative to service the Coverstar annually or more frequently if required (similar to your car). This includes lubricating the pulleys, checking all moving parts, plus cleaning the guides at least every 6 months, or more frequently if required. With the cover open, spray water under pressure directly into the slot through which the cover travels, also spray into the pulley housings at the ends of the guides at close range to dislodge any debris which may have accumulated. Any dirt, leaves, sand and grit which is allowed to build up in the guides will cause abrasion and premature failure of the ropes and webbing, this is not covered under warranty. If you have a cover installed in a pit, make sure the drainage points are kept clear so the cover and mechanism do not stand in water for long periods.





Save on heat, water, electricity and chemicals

A Coverstar automatic cover reduces evaporation of water as well as consumption of chemicals.

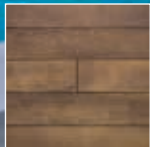
COVERSTAR

Automatic Safety Covers



Coverstar and Certikin have been in partnership for over 20 years. Coverstar's system has developed through many years of innovative design, precision engineering and quality production.

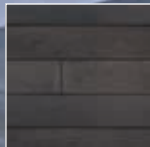
Various colour options are available for the composite decking. Samples are available on request from The Auto Covers Division.



Antique Oak



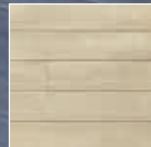
Brushed Basalt



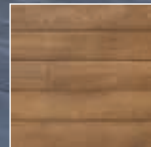
Burnt Cedar



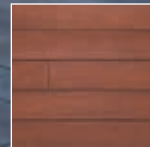
Golden Oak



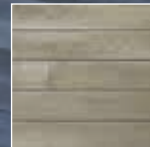
Limed Oak



Coppered Oak



Jarrah



Smoked Oak

Certikin

FLUIDRA

www.certikin.co.uk



Contact your Certikin stockist for prices and availability.

This literature is intended as a guide.
The company reserves the right to change the specifications without notice.