



Wellness Without Limits.®







# Fitness is in our DNA

**Endless Pools Fitness Systems are designed with your wellbeing in mind.**

The most recognised name in aquatic fitness, Endless Pools is the pioneer of swim-in-place technology. Tens of thousands of Endless Pools families worldwide, looking to improve their health and stay active, have trusted Endless Pools for the last 30+ years.

Endless Pools® Fitness Systems combine the revolutionary Endless Pools Swim Current with optional underwater treadmill, rowing, strength-training exercises and relaxing hydrotherapy. Imagine having a beautifully designed, complete home wellness retreat conveniently located steps from your back door. We make it possible because at Endless Pools, fitness is our passion.

## Swim Spa or Fitness System?

You may have heard others call this a "swim spa", but we believe a fitness system is so much more. Why limit yourself to the options of swimming or hot tubbing when aquatic fitness has so many beneficial, low-impact options? It all begins with swimming against the signature Endless Pools smooth,



laminar current. With ease, move from swimming to **running, walking** to resistance **exercises**, or **relax** in our sculpted spa seats. That is why this is more than a swim spa; it is an aquatic fitness system with swim and low-impact exercise features designed to complement one another, so that your

wellness goals are easily achievable. It is also a hydrotherapy retreat to help rejuvenate the body after a workout. Now, that is a fitness system!



## The Endless Pools Story

Growing up, Endless Pools founder James Murdock listened to his father's childhood stories of swimming against the currents of the Arizona irrigation canals. After years of working to recreate his father's swim-in-place experience, Murdock installed his first swimming machine on the pool deck at Columbia University in New York City. That milestone event in 1988 launched the brand that is synonymous with swim-in-place technology.

In 2015, Endless Pools was acquired by Watkins Wellness, the world's leading maker of hot tubs. Endless Pools Fitness Systems combines our signature swim-in-place technologies with the best in spa manufacturing for an all-in-one home wellness system, specifically designed with your wellbeing in mind.

# Achieve Wellness through Aquatic Fitness

---

Renew your commitment to health and fitness with Endless Pools® Fitness Systems. The superior technology of the Endless Pools Swim Machine and contemporary design create a versatile environment for exercise, hydrotherapy and entertainment with a compact footprint that fits beautifully into your garden. Bring home an Endless Pools Fitness System and bring home fitness, relaxation and fun, all in one!

## Why a Fitness System? ▶

An Endless Pools Fitness System lets you enjoy an aquatic workout in the privacy of your own home. No crowds, no traffic, no wasted time, and all the benefits of a balanced workout regimen just outside your door. Plus, our spa seats with hydromassage jets make it easy to enjoy relaxation and entertainment.







### Therapeutic Relief for Aches and Pain ▶

Low-impact aquatic activities can help relieve muscle and joint aches and pains. With a complete body workout in an aquatic environment, you can focus on toning and strengthening exercises, while water's buoyancy provides support for muscles and joints from the impact common with land-based exercises. The water's natural resistance and buoyancy help deliver great results, too!



### ◀ Exercise Versatility

Endless Pools Fitness Systems featuring the Endless Pools Swim Machine is ideal for enjoying a variety of aquatic exercises including swimming, aerobics, rowing and walking.

The performance of our swim machine and underwater treadmill are revolutionary and all models easily adapt to our optional rowing\* and resistance gear. Handrails provide additional options for barre exercises and attaching resistance gear. Top it off with our spa seating and hydromassage jets, which make the transition seamless from low-impact water workouts to rejuvenating post-workout relaxation.

\*Not available for E550 or RecSport



### ◀ Quality Time Together

Perhaps best of all, the whole family can keep fit and stay connected with an Endless Pools Fitness System. No phone, no tablets, no television, just activity and enjoyment with those you care about most.



# Why Endless Pools?

For thirty years, Endless Pools® has been the top choice for casual swimmers up to professional athletes, all seeking an attractive alternative to in-ground pools or bulky home exercise equipment. Our success is attributed to the excellent quality of our swim machine and the positive impact it has on those who swim regularly. Even after 10 years of ownership, 86 percent of Endless Pools owners tell us that they still swim at least once a week!\* Now, we have taken fitness to the next level with the innovative and impeccably designed Endless Pools Fitness Systems, SwimCross® Exercise Systems and RecSport® Recreation Systems, built to meet the highest standards and to deliver a unique ownership experience. It all comes down to our revolutionary swimming technology, coupled with exercise features for a perfect and versatile environment where fitness meets your life, simply. Whether you choose an Endless Pools Fitness System, a SwimCross Exercise System or a RecSport Recreation System by Endless Pools for your home wellness system, its quality and beauty will last for years to come.

\*Based on results from 2015 Endless Pools owner survey.





### Endless Pools Fitness Systems ▶

Combine the original Endless Pools Swim Machine with an optional underwater treadmill. The variable current is wider than your body and deeper than your stroke, simulating an open-water swim. Learn more on pages 8 – 13.



Endless Pools Fitness Systems E500



SwimCross Exercise Systems X2000

### ◀ SwimCross Exercise Systems

Swim and enjoy a jetted swim like no other "swim spa". Three round Swim Jets (on top) provide resistance, while the River Jet (below) provides lift. Learn more on pages 14 – 19.



RecSport Recreation Systems R500

### RecSport Recreation Systems ▶

Ideal for exercise and play for the entire family at an affordable price. Learn more on pages 20 – 23.



## Endless Pools Fitness Systems

When you fit exercise into your day, the benefits abound. An invigorating aquatic workout produces an endorphin effect that is like a wellness gift for your body and mind.

With an Endless Pools® Fitness System you will enjoy all the cardiovascular benefits of exercise without the negative side-effects often felt with a land-based workout provided the exercise is correctly performed. The Endless Pools Swim Machine produces a low-impact resistance current that lets you accelerate your workouts in the soothing comfort of buoyant waters. With the underwater treadmill and fitness options, you will enjoy a variety of low-impact workouts in a convenient garden environment for years of enjoyment. And, with its integrated spa feature, you will have unlimited access to its restorative qualities.









There is nothing like running or walking on the Endless Pools underwater treadmill. The buoyancy of the water eases pressure on your joints while the water's natural resistance provides a great workout.

# Endless Pools Fitness Systems

## The Magic is in the Machine<sup>®</sup>

Our technologically advanced swim machine is industry-leading. Our commitment to making the best even better is what makes the original Endless Pools Swim Machine an unparalleled wellness experience today.

Pair the iconic Endless Pools Swim Machine with the revolutionary underwater treadmill. Add exceptionally versatile exercise features, and the Endless Pools Fitness Systems is truly superior to an ordinary "swim spa" in performance, function and style.

---

### **The Endless Pools Swim Machine**

For a superior swim-in-place experience, look no further than the Endless Pools<sup>®</sup> Swim Machine. Its custom-made, hydraulically powered propulsion system creates a laminar current of up to 19,000 litres per minute that is wider than your body and deeper than your stroke. Multiple conditioning grills smooth and redirect the water, resulting in a swim current that is free of turbulence. Even at full power, it feels like swimming in the smooth current of open water.

Use the water-resistant remote control to increase or decrease speed. The swim

machine flow speed ranges from 4:04 (gentle breaststroke) to 1:14 minutes per 100 metres and is easy to adjust for precise pace selection.

### **Endless Pools Underwater Treadmill**

Optional – yet essential – the Endless Pools hydraulically powered underwater treadmill offers low-impact run or walk options. You will enjoy building cardiovascular strength without experiencing the muscle and joint pressure associated with land-based workouts. Vary the treadmill speed for a gentle walk or an invigorating run. For a more challenging workout turn on the swim

current, and you will experience increased resistance against core, leg, and upper body muscle groups.

With the water resistant remote control, you can increase or decrease speed. The treadmill has a speed range of 0.8 km/h to 8.9 km/h.

For use with both the Swim Machine and underwater treadmill, the optional Pace Display (see page 29) is recommended for optimal workout personalisation.





The smoother the current, the more you will enjoy the simple pleasure of your swim! That is why the Endless Pools Swim Machine uses a custom-made propeller, multiple conditioning grills, and our distinctive honeycomb grate – so you can tune out the world and get lost in your stroke, even at its top speed of 19,000 litres per minute.





# Endless Pools Fitness Systems

## 1. Endless Pools Swim Machine

The Endless Pools® Swim Machine is a hydraulically-powered machine that produces a laminar current wider than your body and deeper than your stroke. The multiple conditioning grills smooth and redirect water, resulting in a turbulence-free swim. The current pace is variable between 4:04/100 metres and 1:14/100 metres, remaining smooth even at full power.

## 2. Underwater Treadmill

The underwater treadmill is a great addition for low-impact run or walk options, without harsh joint and muscle pressure. For a more challenging workout, turn on the swim current to increase resistance against core, leg, and upper body muscle groups. The pace is variable between 0.8 to 8.9 km/h.



## 3. Hydromassage Jets

Distinctive hydromassage jets are perfectly positioned to target all areas of the back and legs, for an ideal cool down.

## 4. Bluetooth-Enabled Sound System (optional)

Integrated 8-speaker sound system, compatible with any Bluetooth®-enabled device.

## 5. 2 mm Steel Frame and ABS Base Pan

Built on a 2 mm steel frame and ABS base pan, this is one of the most durable and reliable systems available. This standard feature provides superior support and protection from unreliable ground surfaces.



## E500





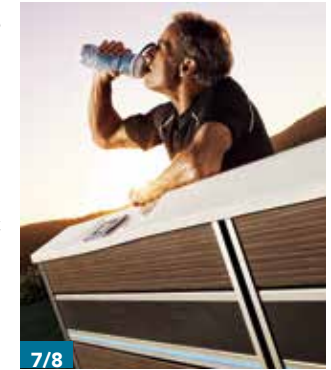


## 6. Shell Design

The seamless acrylic shell has a modern style that flows gracefully from end to end. Available in Ice Grey and Alpine White, the shell is designed for durability and lasting beauty.

## 7. Exterior Cabinet

The exterior cabinet provides a classy and sleek look. Available in Grey Oak or Dark Mocha, its beauty, versatility, and advanced performance make the Endless Pools Fitness System a showpiece you will be proud to display.



## 8. Illumination

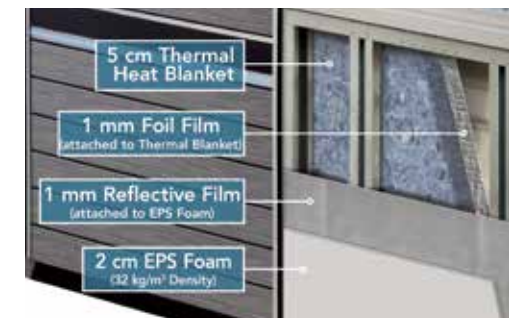
Outside, the LED perimeter illumination provides dramatic impact and ample brilliance. Inside, the multi-colour LED points of light and illuminated waterfalls blend function and beauty.

## 9. Water Management System

Water is kept crystal clear with fewer chemicals, using a dual-water purification system that combines Ultraviolet C (UVC) with eco-friendly CD Ozone. Water is continuously cycled through the circulation pump, coupled with 18 m<sup>2</sup> of filtration, for ease of maintenance and clean water.

## 10. Tri-Thermic Barrier System

Three layers of insulation conserves heat, enhances energy efficiency and lowers operating costs. The Tri-Thermic™ Barrier System is made up of 2 cm, 32 kg/m<sup>3</sup> density expanded polystyrene foam and reflective film, combined with a 5 cm thick heat blanket and foil film.



Dual Temperature Model (E2000)  
A separate spa allows you to regulate temperatures on both the swim and spa sides, independently.



A person is swimming in a pool. The water is a vibrant blue-green color, and there are white jets of water creating a current. The person's head and shoulders are visible on the right side of the frame. The pool's edge is visible on the left and bottom.

# SwimCross Exercise Systems by Endless Pools®

Envision your perfect morning fitness routine: Steps away from your back door awaits a secluded oasis where you can commit to your wellbeing with complete focus and infinite tranquility.

No crowds, no traffic, no wasted time. This is fitness you really can fit into your schedule.

Start each day with an efficient workout in your SwimCross® Exercise System by Endless Pools®. Its unique swim jets are designed to create a smooth current, offering natural resistance for ultimate low-impact, total-body exercise.

Fitness features, hydromassage spa seating and beautiful styling complete the package where your fitness goals are easily achieved at home.









Aquatic resistance exercise is great for building strength without impact.

# SwimCross Exercise Systems

## Wellness Without Limits<sup>®</sup>

SwimCross Exercise Systems provide a jetted swim option with exceptional value. From the makers of Endless Pools, its unique jet configuration produces a less turbulent current than the typical jetted swim spa. From novice to expert swimmers, all will enjoy the system's adjustable output levels. Rowing, resistance exercise and relaxing hydrotherapy options are also included.

### Swim Jets

The swim jets in SwimCross<sup>®</sup> Exercise Systems are designed for both swim- and water-workout options suitable for all ages, body sizes and skill levels. A total of four swim jets, driven by two pumps, provide a powerful and steady water stream unlike the average jet.

The swim jets use a boost effect to draw in more water, multiplying the volume. This results in stronger resistance for swimming with less turbulence. Other swim spas introduce air to produce force, which also creates heavy turbulence. Swimmers will find it easier to stay centred and afloat with the unique jet configuration: Three round Swim Jets (on top) provide resistance, while the River Jet (below) provides lift. All jets use a boost effect to draw in more water,

multiplying the volume. Using the two diverter valves, users can adjust the highly variable pace of the current for both swim and water-workout options.

### Aquatic Exercise

Regular aquatic exercise is a great way to improve fitness, build strength, gain greater flexibility and maintain cardiovascular and mental health – all while relieving pressure on your hips, knees, ankles and back. This is due to the natural resistance and buoyancy of water! Water's buoyancy makes you feel up to 90 percent lighter – putting far less impact on your body. Water has a variable resistance that is based on your movement and can be increased by speeding up or decreased by slowing down. The resistance can be felt in all directions.

Endless Pools<sup>®</sup>, you will enjoy the benefits of swimming and water workout options. With convenient garden access, you can choose when and how to treat yourself to the feel-good benefits of increased aquatic activity.





Three round Swim Jets (on top) provide resistance, while the River Jet (below) provides lift. All jets use a boost effect to draw in more water, multiplying the volume.

X500 shown with Alpine White shell and Grey cabinet



# SwimCross Exercise Systems

## 1. Three Swim Jets and River Jet

Three round Swim Jets (on top) provide resistance, while the River Jet (below) provides lift. All jets use a boost effect to draw in more water, multiplying the volume. Using the two diverter valves, users can adjust the highly variable pace of the current for both swim and water-workout options.



## 2. Exterior Cabinet

Our 18.5 cm cabinet panels feature a finely brushed embossed texture, creating a backdrop for the 3D double contour bands that surround the entire Exercise System. The band plays with light and shadow to create a visual depth and interest to the siding.



## 3. Bluetooth-Enabled Sound System (Optional)

Integrated 8-speaker sound system, compatible with any Bluetooth®-enabled device.

## 4. 2 mm Steel Frame and ABS Base Pan (not shown)

These standard features provides superior support and protection from unreliable ground surfaces.

## X500





Dual Temperature Model (X2000)  
With a separate spa, you can regulate temperatures on both the swim and spa sides, independently.

#### **5. Spa Seating with Hydromassage Jets**

Four distinctive hydromassage jets are perfectly positioned in two captain's chairs with pillows and a middle seat. Jet configurations are made up of mini, rotary, cluster, and directional jets that together target all areas of the back and legs, for an ideal cool down.

#### **6. Shell Design**

The seamless acrylic shell is modern and stylish. Available in Ice Grey and Alpine White, it is designed for durability and lasting beauty.

#### **7. Water Management System**

Water is kept crystal clear with fewer chemicals, using a dual-water purification system that combines Ultraviolet C (UVC) with eco-friendly CD Ozone. Water circulates through the UV + CD Ozone System using the hydromassage pump on low-speed.

#### **8. Tri-Thermic Barrier System (not shown)**

Three layers of insulation conserves heat, enhances energy efficiency and lowers operating costs. The Tri-Thermic™ Barrier System includes a 2 cm, 32 kg/m<sup>3</sup> density expanded polystyrene foam and reflective film, combined with a 5 cm thick heat blanket and foil film.



# RecSport Recreation Systems

Time spent with family and friends, or enjoying solitary relaxation are as beneficial to our well-being as physical fitness. RecSport® Recreation Systems is purposely designed so that both recreation and time for fitness are within reach, at an affordable price.





# RecSport Recreation Systems

## 1. Three Airless Swim Jets

Driven by one pump with multiple speeds, three swim jets provide a powerful and steady stream. The swim jets use a boost effect to draw in more water, multiplying the volume. This results in stronger resistance for exercise and recreation with less turbulence.



## 2. Exterior Cabinet

Designed for long-lasting durability with an attractive embossed pattern and available in Grey or Mocha, the Recsport® Recreation System will beautifully enhance any garden.



## 3. Bluetooth-enabled Sound System

(Optional)

Integrated 8-speaker sound system, compatible with any Bluetooth®-enabled device.

## 4. Solid Wood Frame and ABS Base Pan (not shown)

RecSport Recreation Systems are built on a sturdy wood frame coupled with an ABS base pan that is built to withstand outdoor elements.

## R500





### 5. Spa Seating with Hydromassage Jets

The variety of unique seating options include three hydromassage seats, two "cool down" seats, and a 76 cm deep reef where kids can play.



### 6. Shell Design

The spacious and seamless acrylic shell is available in Ice Grey and Alpine White and is built for durability and lasting beauty.

### 7. Water Management System

Water is kept crystal clear with fewer chemicals, using eco-friendly CD Ozone. Water circulates through the CD Ozone system using the hydromassage pump on low-speed.

### 8. Tri-Thermic Barrier System (not shown)

Three layers of insulation conserves heat, enhances energy efficiency and lowers operating costs. The Tri-Thermic™ Barrier System includes a 2 cm, 32 kg/m<sup>3</sup> density expanded polystyrene foam and reflective film, combined with a 5 cm thick heat blanket and foil film.



# Fitness Accessories

Endless Pools® Fitness Systems options enhance the ownership experience and provide advanced functionality for aquatic workout routines.

## Resistance Bands ▶

Add more options to your workout with resistance bands. Simply attach the bands to the built-in anchor points on your Endless Pools Fitness System for a variety of strength-building exercises. Set includes 3 pairs of colour-coded resistance bands (4.5, 6.8 and 9 kg), with comfort-grip handles. Suitable for all levels.

## Row Bar Kit with Resistance Gear

Rowing is an exceptional cardiovascular exercise that keeps the heart rate elevated and strengthens core muscles. Attach resistance bands to the sturdy handrails for added workout options. Step up the performance of any Fitness, Exercise or Recreation System with the optional rowing and resistance gear. Attach the optional row bars to the built-in anchors and/or handrails to experience a low-impact, full body workout.



## ◀ Swim Tether

All models come equipped with an anchor for attaching our optional swim tether. For beginning swimmers or for anyone looking to improve his or her swimming form, it provides added stability and assistance in maintaining your body position in the current.





### Underwater Treadmill ▶

Available in all depth Fitness System models, our exclusive hydraulically-powered underwater treadmill offers low-impact run or walk options with a speed range of 0.8 to 8.9 km/h.



### Aqua Bike

Get an effective workout without strain on your muscles and joints with this lightweight, yet stable, stationary Aqua Bike. Weighing just 9.5 kg, it is ideal for low to medium-intensity workouts. Position the bike in front of the swim current for a more challenging ride.



### ◀ Underwater Mirror

See yourself swim in place and refine your form for improved performance with the optional 61 x 130 cm stainless steel mirror. Placed on the floor of any Fitness, Exercise or Recreation System, its weight distribution ensures that the mirror stays securely in place.



# Covers

---

## Watkins Cover & Lifter

A real money-saver, the Watkins cover helps maintain heat and reduce evaporation. It can be used on its own or with the Watkins Lifter System. The Watkins Lifter System (UpRite™ / Pro Lift™ IV) lets you install the cover vertically, which is also a space saver.



## VacuSeal Lifting System

The VacuSeal™ Lifting System's unique design ensures a tight seal between covers, which prevents heat loss and evaporation, and optimises efficiencies. It uses a patented "Reverse Pneumatic Technology" which applies downward pressure to seal the two covers together, eliminating the center gap, commonly found with traditional covers. Also, this technology lends itself to easier operation of the cover system especially by a single user.



## Watkins CoverCradle / Pro Lift III Lifter

This cover lifter's unique design uses a hydraulic hinge to simplify opening and closing the Fitness System's swim side cover, in an ultra-smooth gliding action. For those looking for an easy lift assist and have the extra space, the CoverCradle™ / Pro Lift™ III is an excellent option. The CoverCradle / Pro Lift III can be installed on the swim side only.



## Easy Slider Cover Mounts

The Easy Slider gives you another method of removing Watkins covers. By simply attaching the "arms" to the cabinet corners, the Easy Slider eliminates the need for traditional lifters and allows customers to remove the covers without needing to lift the weight of the cover. As an added bonus, when covers are in the open position, they do not obstruct your view.

# Convenience Accessories

Endless Pools® Fitness Systems options enhance the ownership experience and provide advanced functionality for aquatic workout routines.

## Endless Pools Fit@Home WiFi Kit and Mobile App

Put full workout functionality at your fingertips! With the Fit@Home® App you can adjust the speed controls, monitor workout pace, duration and time, and set up workout programs specific to your goals from your smartphone or tablet.



## Bluetooth®-Enabled Sound System

For exercise or garden enjoyment, nothing sets the mood like our optional, integrated 8-speaker system and subwoofer. It is easy to set up: simply pair any Bluetooth-enabled device to the system through the control panel to listen to your favourite music anytime.





## SwimDek Surface Kits

Its nonabsorbent material provides exceptional traction and added comfort. SwimDek® is proven to withstand outdoor aquatic environments and remain beautiful and functional over time. Floor and Step Kits are sold separately.



## Signature Steps

These four tread, lightweight steps allow for easy entry into any Fitness System. The 81 cm high top step, dual handrails with drink holder/towel bar, and sturdy construction make this an ideal option for most users. Assembly is also quick and easy.



## CoolZone Cooling System

Ideal for extreme climate areas and year-round use, CoolZone™ works with the Fitness System components to effectively cool or maintain the water temperature. It makes changing and retaining your ideal water temperature, no matter what month it is, conveniently and efficiently.



## Pace Displays

The optional pace display is a necessity for any swim machine or treadmill user who wants to measure performance. It allows for easy reading of the swim current pace and/or treadmill speed, and can be toggled from meters to yards or viewed as a percentage of the top speed. For swimmers, the pace is displayed in minutes per 100 metres, while the treadmill pace is shown in kilometres per hour. With individual pace displays for swim machine and treadmill, Fitness System owners can use both simultaneously for a more effective workout.



## Exterior LED Lighting Accessory

The LED Light bars are designed to fit seamlessly into the corner caps, creating a built-in appearance once installed. Similar to the LED light bar found on E-Series models; the illumination is a stunning Endless Pools Blue. Two kit options are available for each model: 4-Piece LED light Bar Kit or 8-Piece LED light Bar Kit. All kits come ready to install with all required components included, allowing users to control the lighting from their control panel, and add a major "wow" factor to all X-Series and R-Series model.\*

\*Available for 2020 X-Series and 2019/2020 R-Series model.

# Ownership Experience

---

## Our Quality Assurance

From precise craftsmanship to rigorous quality control and testing, each Endless Pools® Fitness System, SwimCross® Exercise System and RecSport® Recreation System is scrutinised for form, function, fit and finish before it is ready for you. We are committed to the highest level of engineering and construction, and we back each Fitness, Exercise and Recreation System with our exceptional warranty. We take great efforts to ensure your Fitness, Exercise or Recreation System is reliable, so every day you can focus on your wellness, worry free.

## Our Service Promise

When you purchase an Endless Pools Fitness System, SwimCross Exercise System or Recreation System, you become an integral part of the Endless Pools family, and we do not take that commitment lightly. That is why our promise is backed by the full expertise and resources of Watkins Wellness® and our professional retailers, who are committed to ensuring your long-term satisfaction. From purchase to installation to service and more, count on your professional retailer to make Endless Pools Fitness System ownership easy and enjoyable.

## Watkins Wellness / MASCO CORPORATION

Endless Pools Fitness Systems, SwimCross Exercise Systems and RecSport Recreation Systems are made by Watkins Wellness, the world's leading manufacturer of hot tubs and aquatic fitness products. We are dedicated to promoting wellness to consumers who live active lifestyles and are health conscience. Watkins Wellness is part of Masco Corporation, a Fortune 500 company whose family of brands include Bristan® bathroom products, Hansgrohe® faucets and HÜPPE® bath and shower enclosures.







**E500** (457 L x 226 W x 147 D cm)



**E550** (457 L x 239 W x 147 D cm)



**E700** (518 L x 226 W x 147 D cm)



**E2000** (610 L x 226 W x 147 D cm)

## The Magic is in the Machine®.

Swim in place against a steady stream of water so smooth you will think you are swimming in open water.

Run and walk with 360 degrees of resistance and water's buoyancy protecting your joints and muscles from impact.

In an Endless Pools® Fitness System there is no limit to accomplishing a beneficial full-body workout. Swim, bike, walk, exercise, then relax against soothing hydromassage jets, anytime you want, in the comfort of home.

**i** Shown with optional underwater treadmill



# E500

## Endless Pools® Fitness Systems



### MODEL TYPE

#### Dimensions

#### Water Capacity

#### Weight

#### Shell Colour Options

#### Cabinet Colour Options

#### Swim Technology

#### Swim Power Unit

#### Hydromassage Seats

#### Hydromassage Jets - 27

#### Hydromassage Jet Pump

#### Control System\*\*

#### Water Feature

#### Water Management System

#### Circulation Pump

#### Effective Filtration Area

#### Lighting System

#### Substructure

#### Base Pan

#### Heater

#### Energy Efficiency

#### Stainless Steel Grab Rails

#### Music Option

#### Exercise Equipment Options

#### Vinyl Cover & Lifter Options

#### Additional Options

### SWIM & TREADMILL

457 x 226 x 147 cm

6,570 litres

1,375 kg (Dry)  
8,725 kg (Filled\*)

Alpine White or Ice Grey

Dark Mocha or Grey Oak

Endless Pools Swim Machine

5 HP Hydraulic Power Unit

3

1 Large Jet, 2 Rotary Jets, 2 Directional Jets, 22 Mini Jets

2.5 HP Continuous Duty; 5.2 HP Breakdown Torque - 1 Speed Pump

LCD Control Panel; 230V/50Hz  
24A + 32A

### SWIM

457 x 226 x 147 cm

6,705 litres

1,320 kg (Dry)  
8,800 kg (Filled\*)

2 x 24A

2 Illuminated Waterfalls

UV-C + CD Ozone

High-Flow Circulation Pump

18 m<sup>2</sup>

Multi-Colour 18 LED Points of Light & Exterior LED Illumination Bar

2 mm Galvanised Steel Frame

Thermoformed ABS Base Pan

3000 watt/230v

EPS Foam + Reflective Film; Certified to the APSP 14 American Standard and the California Energy Commission (CEC) in accordance with California Law

3 Satin Stainless Steel Rails

8 Speakers + Subwoofer, Bluetooth® Enabled

Swim Tether, Rowing Kit, Resistance Bands, Floor Mirror, Aqua Bike, Pace Display

Watkins Covers & Lifters (Uprite™/ProLift™ IV), Easy Slider Cover Mounts or VacuSeal™ Cover System, CoverCradle™/ProLift™ III

CoolZone™ Cooling System, SwimDek® Surface Kits, Signature Steps, Fit@Home® Mobile App & Wi-Fi Kit



### SHELL COLOURS



Ice Grey



Alpine White

### CABINET COLOURS



Grey Oak



Dark Mocha

\*Includes water and 10 adults weighing 80 kg each

\*\*Also offered in a 3 Phase configuration 380-415V, 3N-, 16A, 50Hz, Three Phase 16A/phase G.F.C.I protected circuit, other electrical configurations possible

All rights reserved. Specifications, colours, and surface materials subject to change without notice



# E550

## Endless Pools® Fitness Systems



### MODEL TYPE

	SWIM & TREAD	SWIM
<b>Dimensions</b>	457 L X 239 W X 147 H cm	457 L X 239 W X 147 H cm
<b>Water Capacity</b>	8,935 litres	9,050 litres
<b>Weight</b>	1,680 kg (Dry) / 11,390 kg (Filled*)	1,625 kg (Dry) / 11,450 kg (Filled*)
<b>Shell Colour Options</b>	Alpine White or Ice Grey	
<b>Cabinet Colour Options</b>	Dark Mocha or Grey Oak	
<b>Swim Technology</b>	Endless Pools® Swim Machine	
<b>Swim Power Unit</b>	5 HP Hydraulic Power Unit	
<b>Hydromassage Seats</b>	n/a	
<b>Hydromassage Jets - 23</b>	1 Large Rotary Jet, 6 Medium Rotary Jets, 16 Mini Jets	
<b>Hydromassage Jet Pump</b>	2.5 HP Continuous Duty; 5.2 HP Breakdown Torque – 1 Speed Pump	
<b>Control System**</b>	LCD Control Panel; 230v/50 Hz 24A + 32A <span style="float: right;">2 x 24A</span>	
<b>Water Feature</b>	n/a	
<b>Water Management System</b>	UVC + CD Ozone	
<b>Circulation Pump</b>	1/15 Hi-Flow Circulation Pump	
<b>Effective Filtration Area</b>	18 m <sup>2</sup>	
<b>Lighting System</b>	24 Multi-Colour LED Points of Lights & Exterior Illumination Bar	
<b>Substructure</b>	2 mm Galvanised Steel Frame	
<b>Base Pan</b>	Thermoformed ABS Base Pan	
<b>Heater</b>	3000w/230v	
<b>Energy Efficiency</b>	EPS Foam + Reflective Film; Certified to the APSP 14 American Standard and the California Energy Commission (CEC) in accordance with California Law	
<b>Stainless Steel Grab Rails</b>	5 Stainless Steel Rails	
<b>Music Option</b>	8 Speakers + Subwoofer, Bluetooth® Enabled	
<b>Exercise Equipment Options</b>	Swim Tether, Resistance Bands, Floor Mirror, Aqua bike, Pace Display	
<b>Vinyl Cover &amp; Lifter Options</b>	Watkins Covers & Lifters (Uprite™/ProLift™ IV), Easy Slider Cover Mounts or VacuSeal™ Cover System, CoverCradle™/ProLift™ III	
<b>Additional Options</b>	CoolZone™ Cooling System, SwimDek® Surface Kits, Signature Steps, Fit@Home® Wi-Fi & Mobile App	



### SHELL COLOURS



Ice Grey

Alpine White

### CABINET COLOURS



Grey Oak

Dark Mocha

\*Includes water and 10 adults weighing 80 kg each

\*\*Also offered in a 3 Phase configuration 380-415V, 3N~, 16A, 50Hz, Three Phase 16A/phase G.F.C.I protected circuit, other electrical configurations possible

All rights reserved. Specifications, colours, and surface materials subject to change without notice

# E700

## Endless Pools® Fitness Systems



### MODEL TYPE

#### Dimensions

518 x 226 x 147 cm

### SWIM

518 x 226 x 147 cm

#### Water Capacity

7,950 litres

8,140 litres

#### Weight

1,430 kg (Dry) /  
10,160 kg (Filled\*)

1,375 kg (Dry) /  
10,290 kg (Filled\*)

#### Shell Colour Options

Alpine White or Ice Grey

#### Cabinet Colour Options

Dark Mocha or Grey Oak

#### Swim Technology

Endless Pools Swim Machine

#### Swim Power Unit

5 HP Hydraulic Power Unit

#### Hydromassage Seats

3

#### Hydromassage Jets - 27

1 Large Jet, 2 Rotary Jets, 2 Directional Jets, 22 Mini Jets

#### Hydromassage Jet Pump

2.5 HP Continuous Duty; 5.2 HP Breakdown Torque - 1 Speed Pump

#### Control System\*\*

LCD Control Panel; 230V/50Hz  
24A + 32A

2 x 24A

#### Water Feature

2 Illuminated Waterfalls

#### Water Management System

UVC + CD Ozone

#### Circulation Pump

High-Flow Circulation Pump

#### Effective Filtration Area

18 m<sup>2</sup>

#### Lighting System

Multi-Colour 20 LED Points of Light & Exterior LED Illumination Bar

#### Substructure

2 mm Galvanised Steel Frame

#### Base Pan

Thermoformed ABS Base Pan

#### Heater

3000 watt/230v

#### Energy Efficiency

EPS Foam + Reflective Film; Certified to the APSP 14 American Standard and the California Energy Commission (CEC) in accordance with California Law

#### Stainless Steel Grab Rails

3 Satin Stainless Steel Rails

#### Music Option

8 Speakers + Subwoofer, Bluetooth® Enabled

#### Exercise Equipment Options

Swim Tether, Rowing Kit, Resistance Bands, Floor Mirror, Aqua Bike, Pace Display

#### Vinyl Cover & Lifter Options

Watkins Covers & Lifters (Uprite™/ProLift™ IV), Easy Slider Cover Mounts or VacuSeal™ Cover System, CoverCradle™/ProLift™ III

#### Additional Options

CoolZone™ Cooling System, SwimDek® Surface Kits, Signature Steps, Fit@Home® Mobile App & Wi-Fi Kit



### SHELL COLOURS



Ice Grey

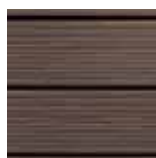


Alpine White

### CABINET COLOURS



Grey Oak



Dark Mocha

\*Includes water and 10 adults weighing 80 kg each

\*\*Also offered in a 3 Phase configuration 380-415V, 3N-, 16A, 50Hz, Three Phase 16A/phase G.F.C.I protected circuit, other electrical configurations possible

All rights reserved. Specifications, colours, and surface materials subject to change without notice



# E2000 Endless Pools® Fitness Systems



MODEL TYPE	SWIM & TREADMILL	SWIM
<b>Dimensions</b>	610 L x 226 W x 147 H cm	610 L x 226 W x 147 H cm
Swim Side:	457 L x 226 W x 147 H cm	457 L x 226 W x 147 H cm
Spa Side:	152 L x 226 W x 147 H cm	152 L x 226 W x 147 H cm
<b>Water Capacity</b>	8,900 Litres	9,065 Litres
Swim Side:	7,575 Litres	7,740 Litres
Spa Side:	1,325 Litres	1,325 Litres
<b>Weight</b>	1,915 kg (Dry) / 11,590 kg (Filled*)	1,860 kg (Dry) / 11,705 kg (Filled*)
<b>Shell Colour Options</b>	Alpine White or Ice Grey	
<b>Cabinet Colour Options</b>	Dark Mocha or Grey Oak	
<b>Swim Technology</b>	Endless Pools Swim Machine	
<b>Swim Power Unit</b>	5 HP Hydraulic Power Unit	
<b>Substructure</b>	2 mm Galvanised Steel Frame	
<b>Base Pan</b>	Thermoformed ABS Base Pan	
<b>Energy Efficiency</b>	EPS Foam + Reflective Film; Certified to the APSP 14 American Standard and the California Energy Commission (CEC) in accordance with California Law	
<b>Music Option</b>	8 Speakers + Subwoofer, Bluetooth® Enabled	
<b>Vinyl Cover &amp; Lifter Options</b>	Watkins Covers & Lifters (Uprite™/ProLift™ IV), Easy Slider Cover Mounts or VacuSeal™ Cover System	
<b>Additional Options</b>	CoolZone™ Cooling System, SwimDek® Surface Kits, Signature Steps, Fit@Home® Mobile App & Wi-Fi Kit	
	SWIM SIDE	SPA SIDE
<b>Control System**</b>	LCD Control Panel 230V/50 Hz 24A + 32A	2 x 24A
<b>Seats</b>	Bench Seat	4 Hydrotherapy Seats + Cool Down Seat
<b>Hydrotherapy Jets - 36</b>	Not Applicable	2 Large Jets, 2 Rotary Jets, 6 Directional Jets, 26 Mini Jets
<b>Hydromassage Jet Pump</b>	Not Applicable	2 - 2.5 HP Continuous Duty; 5.2 HP Breakdown Torque - 1 Speed Pumps
<b>Water Feature</b>	2 Illuminated Waterfalls	1 Illuminated Waterfall
<b>Water Management System</b>	UVC + CD Ozone	CD Ozone
<b>Circulation Pump</b>	High-Flow Circulation Pump	Circulation Pump
<b>Effective Filtration Area</b>	18 m <sup>2</sup>	5 m <sup>2</sup>
<b>Lighting System</b>	LED Illumination Bar 14 Multi-Colour LED Points of Light	12 Multi-Colour LED Points of Light
<b>Heater</b>	3000w/230v	3000w/230v
<b>Insulation</b>	Tri-Thermic™ Barrier System	Full Foam Insulation
<b>Stainless Steel Grab Rails</b>	3 Stainless Steel Rails	Not applicable
<b>Exercise Equipment Options</b>	Swim Tether, Rowing Kit, Resistance Bands, Floor Mirror, Aqua Bike, Pace Display	Not applicable

## SHELL COLOURS



Ice Grey

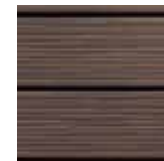


Alpine White

## CABINET COLOURS



Grey Oak

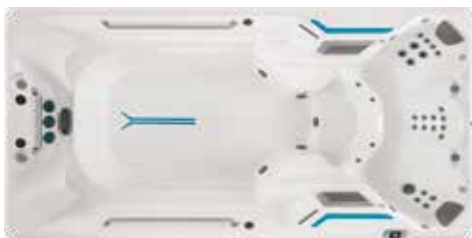


Dark Mocha

\*Includes water and 10 adults weighing 80 kg each  
 \*\*Also offered in a 3 Phase configuration 380-415V, 3N-, 24A, 50Hz, Three Phase 24A/phase G.F.C.I protected circuit, other electrical configurations possible

All rights reserved. Specifications, colours, and surface materials subject to change without notice





**X500** (457 L x 226 W x 127 D cm)



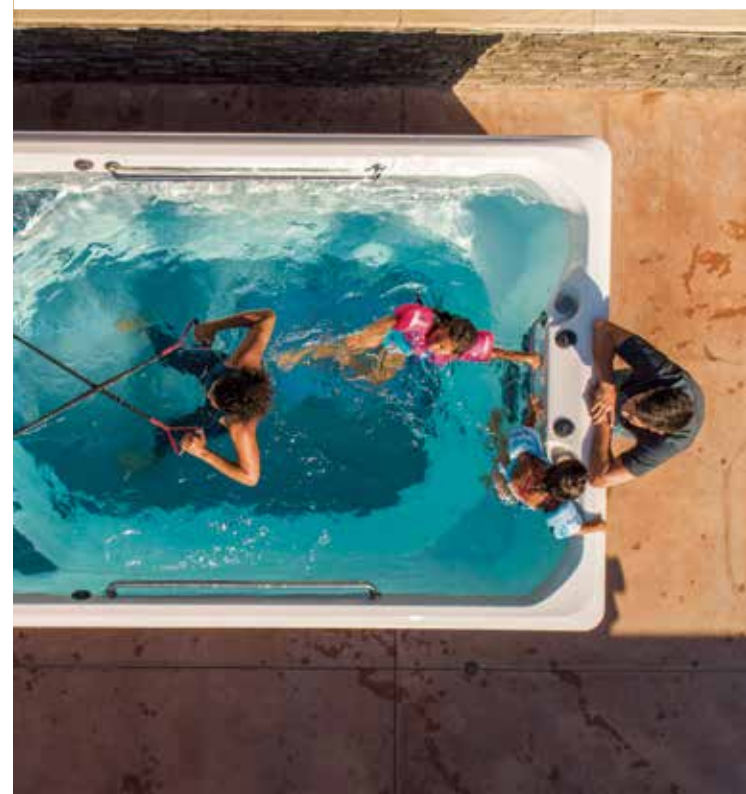
**X2000** (610 L x 226 W x 147 D cm)

## Exercise that fits your life.

Feel water's resistance for any exercise regimen, any time of day.

Swim and enjoy a jetted swim like no other "swim spa". Three round Swim Jets (on top) provide resistance, while the River Jet (below) provides lift. All jets use a boost effect to draw in more water, multiplying the volume. Using the two diverter valves, users can adjust the highly variable pace of the current for both swim and water-workout options.

With SwimCross® Exercise Systems, convenience and versatility are abound so that staying active and maintaining a busy schedule are not mutually exclusive. Never again ask "how will I fit a workout into my day", with a SwimCross Exercise System just steps from your door.





# X500

## SwimCross® Exercise Systems

From the makers of



<b>Dimensions (L x W x H)</b>	457 x 226 x 127 cm
<b>Water Capacity</b>	6,250 litres
<b>Weight</b>	1,230 kg (Dry) / 8,260 kg (Filled*)
<b>Shell Colour Options</b>	Alpine White or Ice Grey
<b>Cabinet Colour Options</b>	Mocha or Grey
<b>Swim Technology</b>	3 round Swim Jets, 1 River Jet
<b>Swim Jet Pumps</b>	2.5 HP Continuous Duty; 5.2 HP Breakdown Torque – 1 Single Speed & 1 Dual Speed
<b>Hydromassage Seats</b>	3
<b>Hydromassage Jets - 27</b>	1 Large Jet, 2 Rotary Jets, 2 Directional Jets, 22 Mini Jets
<b>Hydromassage Jet Pump</b>	2.5 HP Continuous Duty; 5.2 HP Breakdown Torque – Dual Speed Pump
<b>Control System**</b>	LCD Control Panel; 230V, 32A, 50Hz
<b>Water Feature</b>	2 Illuminated Waterfalls
<b>Water Management System</b>	UVC + CD Ozone
<b>Effective Filtration Area</b>	18m <sup>2</sup>
<b>Lighting System</b>	Multi-Colour 16 LED Lights, Exterior LED Lighting (optional)
<b>Substructure</b>	2 mm Galvanised Steel Frame
<b>Base Pan</b>	Thermoformed ABS Base Pan
<b>Heater</b>	3000 watt
<b>Energy Efficiency</b>	EPS Foam + Reflective Film; Certified to the APSP 14 American Standard and the California Energy Commission (CEC) in accordance with California Law
<b>Stainless Steel Grab Rails</b>	3 Stainless Steel Rails
<b>Music Option</b>	8 Speakers + Subwoofer, Bluetooth® Enabled
<b>Exercise Equipment Options</b>	Swim Tether, Rowing Kit, Resistance Bands, Floor Mirror, Aqua Bike
<b>Vinyl Cover &amp; Lifter Options</b>	Watkins Bi-Fold Covers & Lifters (UpRite™/Pro Lift™ IV), Easy Slider Cover Mounts or VacuSeal™ Cover System, CoverCradle™/Pro Lift™ III Lifter System
<b>Additional Options</b>	CoolZone™ Cooling System, SwimDek® Surface Kits, Signature Steps



### SHELL COLOURS



Ice Grey

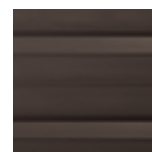


Alpine White

### CABINET COLOURS



Grey



Mocha

\*Includes water and 10 adults weighing 80 kg each

\*\*Other electrical configurations possible

All rights reserved. Specifications, colours, and surface materials subject to change without notice

# X2000 SwimCross® Exercise Systems



<b>Dimensions</b>	610 L X 226 W X 147 H cm <b>Swim Side:</b> 457 L X 226 W X 147 H cm <b>Spa Side:</b> 152 L X 226 W X 147 H cm
<b>Water Capacity</b>	8,895 Litres ( <b>Swim Side:</b> 7,570 Litres / <b>Spa Side:</b> 1,325 Litres)
<b>Weight</b>	1,570 kg (Dry) / 11,245 kg (Filled*)
<b>Shell Colour Options</b>	Alpine White or Ice Grey
<b>Cabinet Colour Options</b>	Mocha or Grey
<b>Swim Technology</b>	3 round Swim Jets, 1 River Jet
<b>Swim Jet Pumps</b>	2.5HP Continuous Duty; 5.2 HP Breakdown Torque – (1) Single Speed & (1) Dual Speed"
<b>Substructure</b>	2 mm Galvanised Steel Frame
<b>Base Pan</b>	Thermoformed ABS Base Pan
<b>Energy Efficiency</b>	EPS Foam + Reflective Film; Certified to the APSP 14 American Standard and the California Energy Commission (CEC) in accordance with California Law
<b>Music Option</b>	8 Speakers + Subwoofer, Bluetooth® Enabled
<b>Cover &amp; Lifter Options</b>	Watkins® Bi-Fold Covers (UpRite™/Pro Lift™ IV), Easy Slider Cover Mounts & Lifters VacuSeal™ Cover System
<b>Additional Options</b>	CoolZone™ Cooling System, SwimDek® Surface Kits, Signature Steps

	<b>SWIM SIDE</b>	<b>SPA SIDE</b>
<b>Seats</b>	Bench Seat	4 Hydrotherapy Seats + Cool Down Seat
<b>Hydrotherapy Jets – 36</b>	Not Applicable	2 Large Jets, 2 Rotary Jets, 6 Directional Jets, 26 Mini Jets
<b>Hydromassage Jet Pump</b>	Not Applicable	2 – 2.5 HP Continuous Duty; 5.2 HP Breakdown Torque – Single Speed Pumps
<b>Control System**</b>	LCD Control Panel 230v/48amp, 50Hz	LCD Control Panel
<b>Water Feature</b>	2 Illuminated Waterfalls	1 Illuminated Waterfall
<b>Water Management System</b>	UVC + CD Ozone	CD Ozone
<b>Circulation Pump</b>	High-Flow Circulation Pump	Filtration Pump
<b>Effective Filtration Area</b>	18 m <sup>2</sup>	5 m <sup>2</sup>
<b>Lighting System*</b>	14 Multi-Colour LED Points of Light * Exterior LED Lighting (optional)	12 Multi-Colour LED Points of Light
<b>Heater</b>	3000w	3000w
<b>Insulation</b>	Tri-Thermic™ Barrier System	Full Foam Insulation
<b>Grab Rails</b>	3 Stainless Steel Rails	Not Applicable

## SHELL COLOURS



Ice Grey

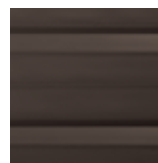


Alpine White

## CABINET COLOURS



Grey



Mocha



\*Includes water and 10 adults weighing 80 kg each  
\*\*Other electrical configurations possible

All rights reserved.  
Specifications, colours, and surface materials subject to change without notice





**R200** (366 L x 226 W x 127 D cm)



**R500** (457 L x 226 W x 127 D cm)

## Fitness is not always physical.

Time spent with family and friends, or enjoying solitary relaxation are as beneficial to our well-being as physical fitness. RecSport® Recreation Systems are purposely designed so that both recreation and time for fitness are within reach, at an affordable price.

### **i** DID YOU KNOW?

Water's buoyancy makes you feel up to 90 percent lighter and provides 360 degrees of resistance!



# R200 RecSport® Recreation Systems



<b>Dimensions</b>	366 L X 226 W X 127 H cm
<b>Water Capacity</b>	5,055 Litres
<b>Weight</b>	840 kg (Dry) / 6,680 kg (Filled*)
<b>Shell Colour Options</b>	Alpine White or Ice Grey
<b>Cabinet Colour Options</b>	Mocha or Grey
<b>Swim Technology</b>	3 Swim Jets – Max 815 Litres Per Minute
<b>Swim Jet Pump</b>	2.5 HP Continuous Duty; 5.2 HP Breakdown Torque – Dual Speed Pump
<b>Seats</b>	5
<b>Hydromassage Jets - 27</b>	1 Large Jet, 2 Rotary Jets, 2 Directional Jets, 22 Mini Jets
<b>Hydromassage Jet Pump</b>	2.5 HP Continuous Duty; 5.2 HP Breakdown Torque – Dual Speed Pump
<b>Control System**</b>	LCD Control Panel, 230v/24amp, 50 Hz
<b>Water Feature</b>	1 Illuminated Waterfall
<b>Water Management System</b>	CD Ozone
<b>Effective Filtration Area</b>	9 m <sup>2</sup>
<b>Lighting System</b>	20 Multi-Colour LED Points of Light, Exterior LED Lighting (optional)
<b>Substructure</b>	Wood
<b>Base Pan</b>	Thermoformed ABS Base Pan
<b>Heater</b>	3000w/230V
<b>Energy Efficiency</b>	EPS Foam + Reflective Film; Certified to the APSP 14 American Standard and the California Energy Commission (CEC) in accordance with California Law
<b>Grab Rails</b>	3 Stainless Steel Grab Rails
<b>Music Option</b>	8 Speakers + Subwoofer, Bluetooth®-Enabled
<b>Fitness Accessories</b>	Swim Tether, Resistance Bands; Floor Mirror, Aqua bike
<b>Cover &amp; Lifter Options</b>	Watkins Covers & Lifters (Uprite™/ProLift™ IV), Easy Slider Cover Mounts or VacuSeal™ Cover System, CoverCradle™/ProLift™ III
<b>Additional Options</b>	CoolZone™ Cooling System, SwimDek® Surface Kits, Signature Steps

## SHELL COLOURS



Ice Grey

Alpine White

## CABINET COLOURS



Grey

Mocha

\*Includes water and 10 adults weighing 80 kg each  
 \*\*Other electrical configurations possible

All rights reserved. Specifications, colours, and surface materials subject to change without notice





# R500 RecSport® Recreation Systems

From the makers of



<b>Dimensions</b>	457 L X 226 W X 127 H cm
<b>Water Capacity</b>	6,625 litres
<b>Weight</b>	935 kg (Dry) / 8,475 kg (Filled*)
<b>Swim Technology</b>	3 Swim Jets - Max 815 Litres Per Minute
<b>Swim Jet Pump</b>	2.5 HP Continuous Duty; 5.2 HP Breakdown Torque – Dual Speed Pump
<b>Seats</b>	5
<b>Hydromassage Jets - 27</b>	1 Large Jet, 2 Rotary Jets, 2 Directional Jets, 22 Mini Jets
<b>Hydromassage Jet Pump</b>	2.5 HP Continuous Duty; 5.2 HP Breakdown Torque – Dual Speed Pump
<b>Control System**</b>	LCD Control Panel, 230v/24amp, 50 Hz
<b>Water Feature</b>	1 Illuminated Waterfall
<b>Water Management System</b>	CD Ozone
<b>Effective Filtration Area</b>	9 m <sup>2</sup>
<b>Lighting System</b>	24 Multi-Colour LED Points of Light, Exterior LED Lighting (optional)
<b>Substructure</b>	Wood
<b>Base Pan</b>	Thermoformed ABS Base Pan
<b>Heater</b>	3000w/230V
<b>Energy Efficiency</b>	EPS Foam + Reflective Film; Certified to the APSP 14 American Standard and the California Energy Commission (CEC) in accordance with California Law
<b>Grab Rails</b>	3 Stainless Steel Grab Rails
<b>Music Option</b>	8 Speakers + Subwoofer, Bluetooth®-Enabled
<b>Fitness Accessories</b>	Swim Tether, Resistance Bands; Floor Mirror, Aqua bike
<b>Cover &amp; Lifter Options</b>	Watkins Covers & Lifters (Uprite™/ProLift™ IV), Easy Slider Cover Mounts or VacuSeal™ Cover System, CoverCradle™/ProLift™ III
<b>Additional Options</b>	CoolZone™ Cooling System, SwimDek® Surface Kits, Signature Steps

## SHELL COLOURS



Ice Grey

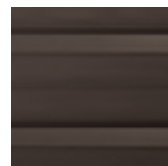


Alpine White

## CABINET COLOURS



Grey



Mocha

\*Includes water and 10 adults weighing 80 kg each  
 \*\*Other electrical configurations possible

All rights reserved. Specifications, colours, and surface materials subject to change without notice







**ENDLESS POOLS**<sup>®</sup>  
FITNESS SYSTEMS  
Wellness Without Limits.<sup>®</sup>





[www.EndlessPools.co.uk](http://www.EndlessPools.co.uk)

©2021 Watkins Wellness, 1280 Park Center Drive, Vista, CA 92081, USA.  
All rights reserved. Printed in EU. Endless Pools, SwimCross, RecSport,  
Your Space. Your Pace., Wellness Without Limits, The Magic in the  
Machine, Endless Pools Fit@Home, Tri-Thermic, Hot Spring, Caldera, ProLift,  
Uprite and CoverCradle are trademarks of Watkins Wellness. Hansgrohe  
and Hüppe are registered trademarks. Bristan is a registered trademark.  
The Bluetooth word mark is a trademark owned by Bluetooth SIG, Inc.,  
VacuSeal is a trademark of Hot Tub Products, LLC. SwimDek is a registered  
trademark of SeaDek, Inc. Specifications subject to change without notice.  
Patents pending.