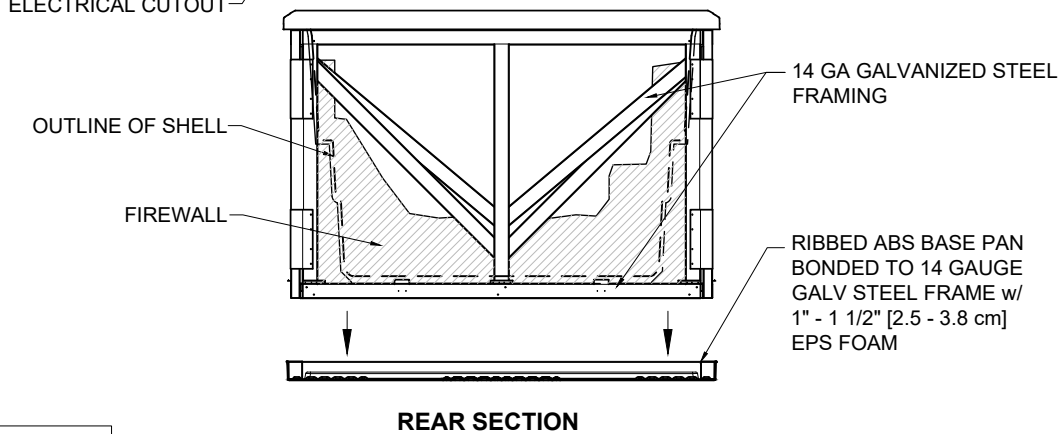
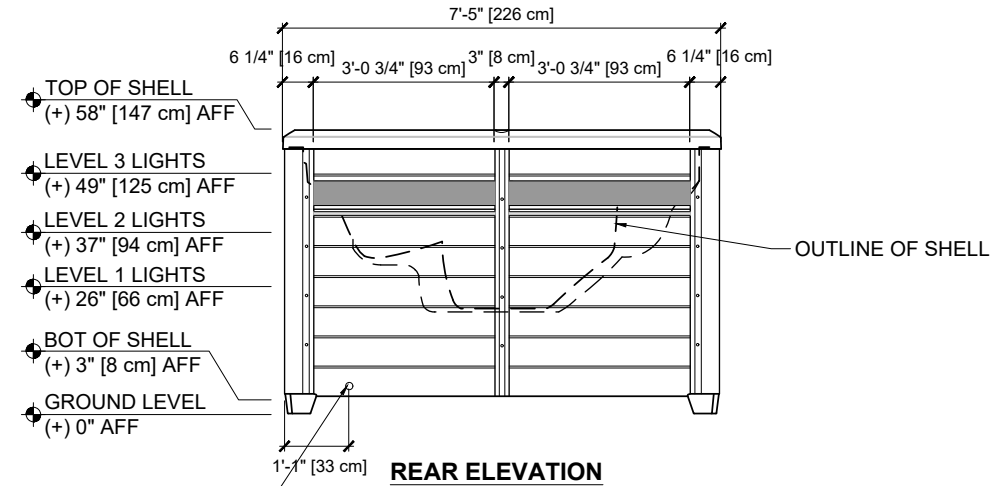
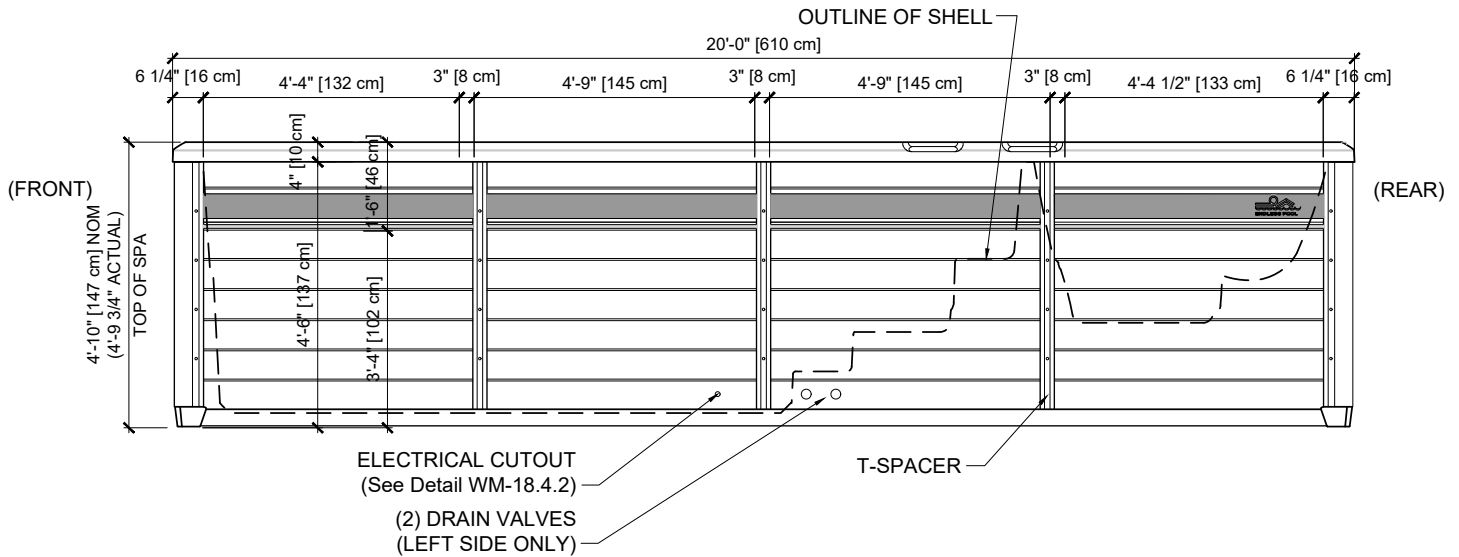


NOTE: 2'-0" [60 cm] ACCESS AROUND PERIMETER RECOMMENDED FOR SERVICE



E2000 (58" Tall)
Endless Pools® Fitness System
General Information
AQUATIC FITNESS SYSTEMS DETAILS

DETAIL NUMBER:
WM-18.0.8
REV: 2019/01/09

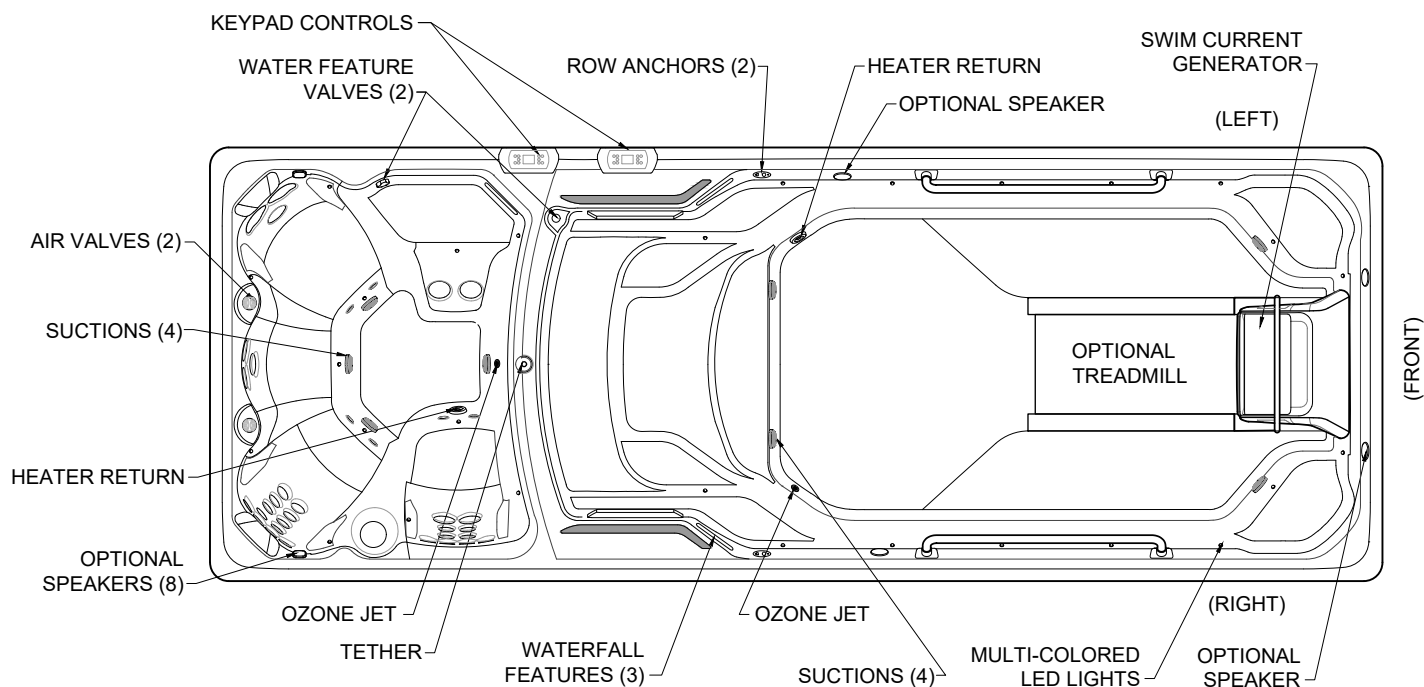


NOTE: 2'-0" [60 cm] ACCESS AROUND PERIMETER RECOMMENDED FOR SERVICE

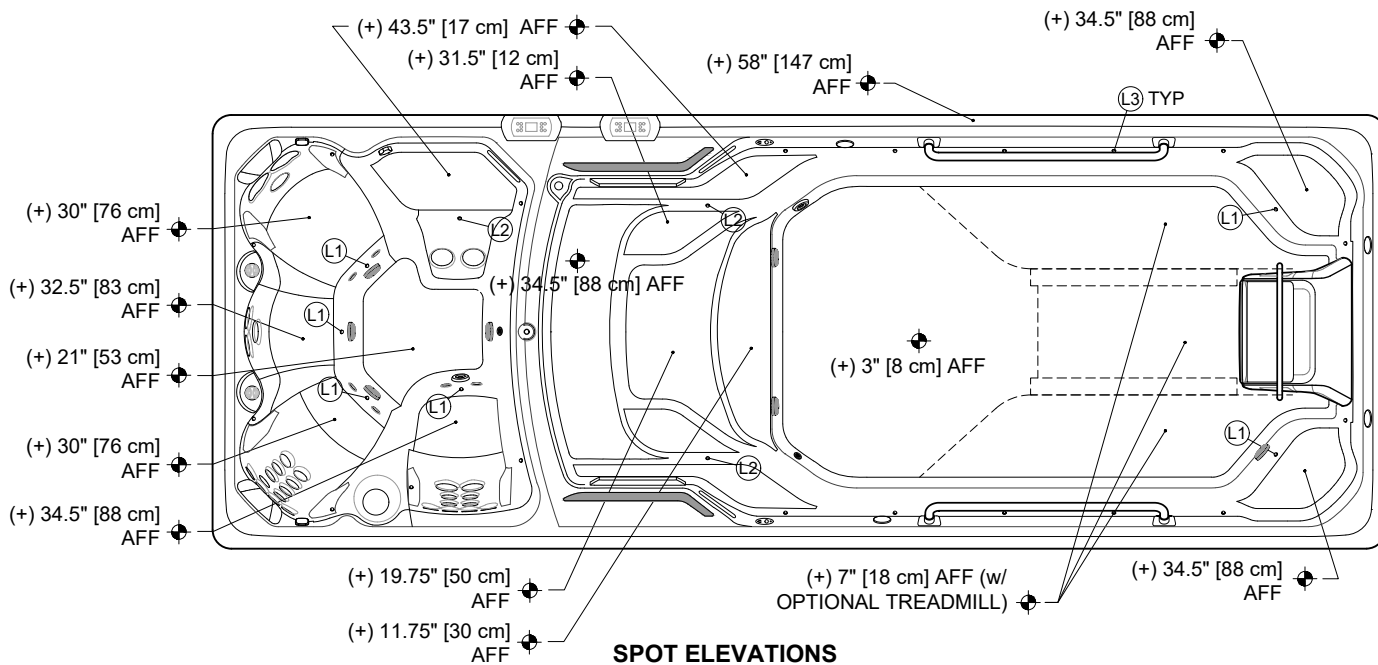


E2000 (58" Tall)
Endless Pools® Fitness System
Elevations and Sections
 AQUATIC FITNESS SYSTEMS DETAILS

DETAIL NUMBER:
WM-18.1.8
 REV: 2018/11/20



SYSTEM PARTS



SPOT ELEVATIONS

INTERNAL LIGHTS KEY*	
L1	= LEVEL 1 (+) 26" [66 cm] AFF
L2	= LEVEL 2 (+) 37" [94 cm] AFF
L3	= LEVEL 3 (+) 49" [125 cm] AFF

*AFF = ELEVATION ABOVE FINISH FLOOR

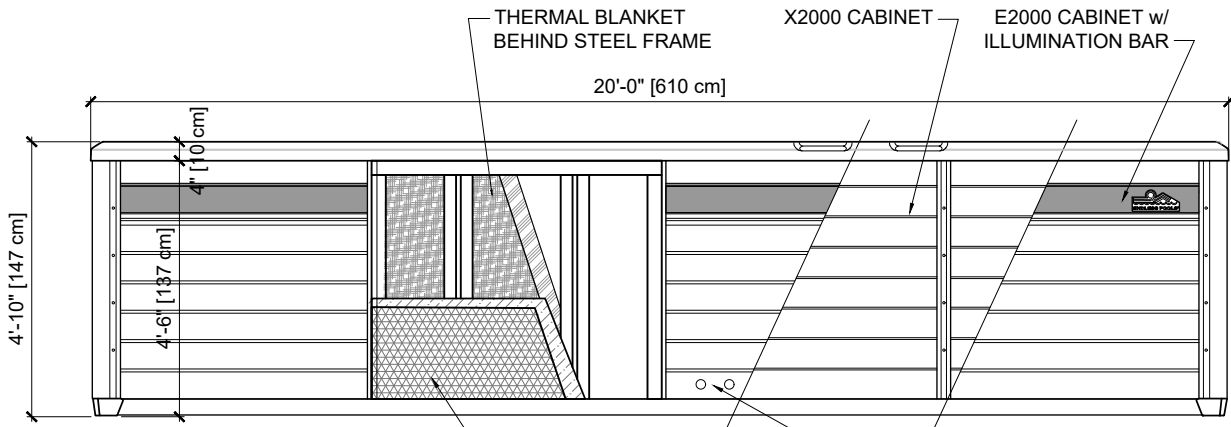


E2000 (58" Tall)
Endless Pools[®] Fitness System
Egress Details with Spot Elevations
 AQUATIC FITNESS SYSTEMS DETAILS

DETAIL NUMBER:

WM-18.2.4

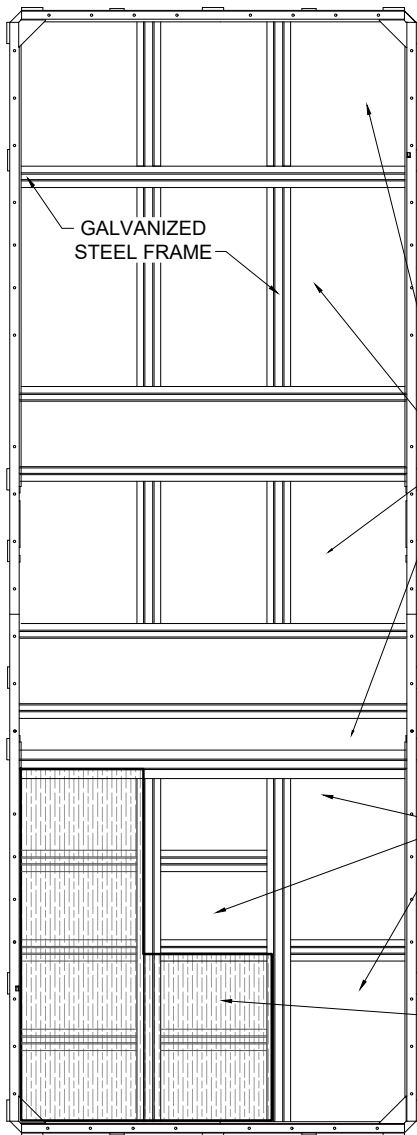
REV: 2019/01/04



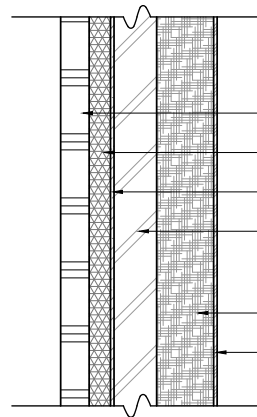
LEFT ELEVATION

SEE DETAIL WM-18.4.2 FOR DRAIN & ELECT CUTOUT DETAILS

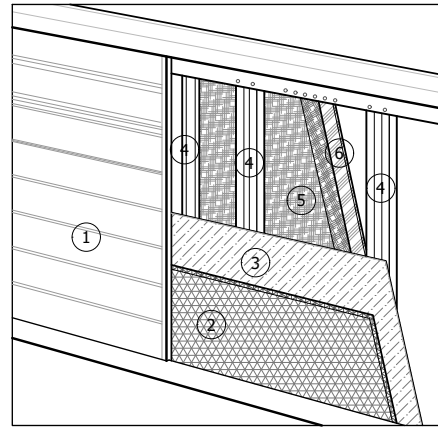
INSULATION BEHIND SKIRTING PANELS (SEE DETAIL BELOW)

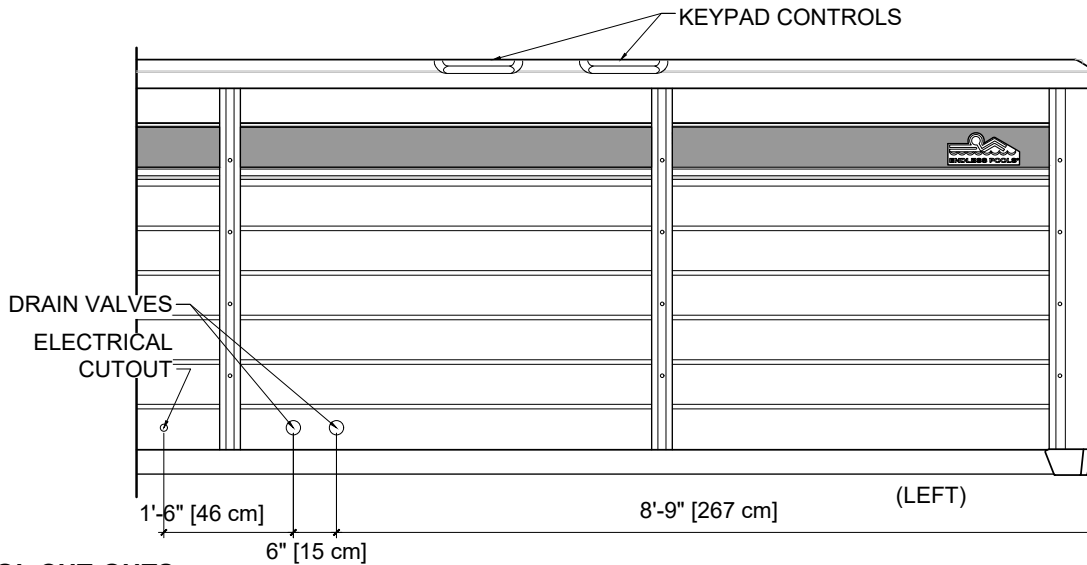


PLAN VIEW OF BASE

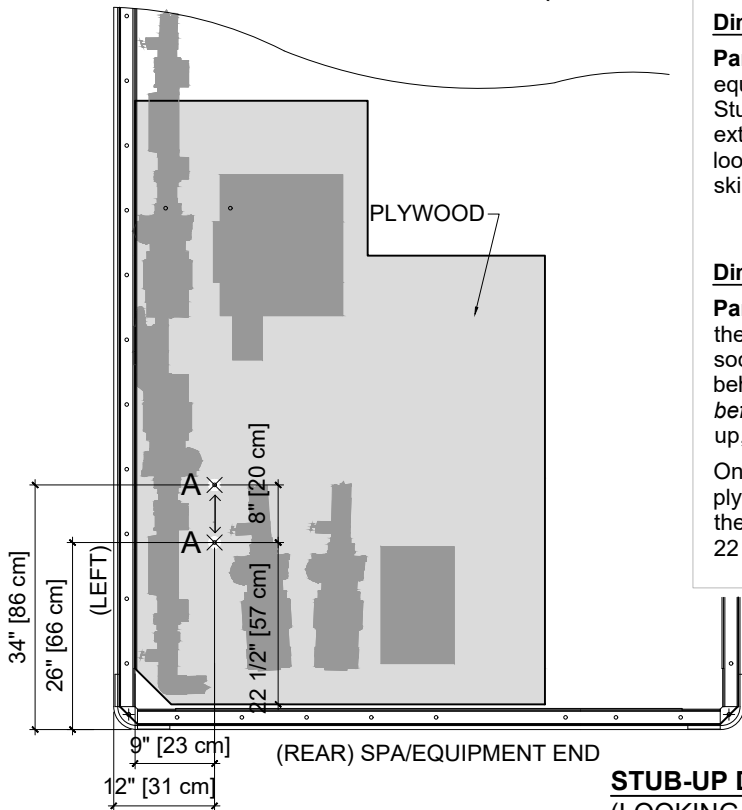
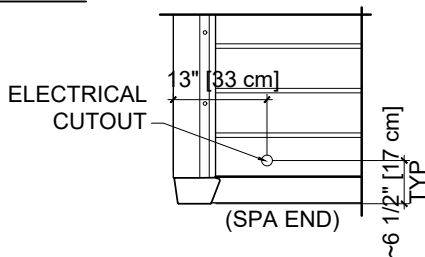


- ① SKIRTING PANEL
- ② 3/4" EPS FOAM (2 lbs density)
- ③ 1 mm REFLECTION FILM
- ④ GALVANIZED STEEL FRAME (HOT-DIPPED IN ZINC: COATED w/ MIN OF 0.9 oz ZINC PER SF)
- ⑤ 2" THERMAL HEAT BLANKET
- ⑥ 1 mm FOIL FILM





POOL CUT-OUTS



STUB-UP DETAIL
(LOOKING DOWN)

Stub-up Directions (Use a 2" [5 cm] Hole Saw)

Dimensions from Outside of Skirting:

Part 1: (See Stub-up Detail). The stub-up will be located in the equipment end (rear) under the jetted seats. The center line for Stub-up 'A' can be measured 12" [31 cm] from the skirting exterior on the left side of the Aquatic Fitness System (AFS) looking at Spa's Equipment End and 26-34" [66-86 cm] from the skirting exterior on the right looking at Spa's left side.

Dimensions from Inside of Cabinet:

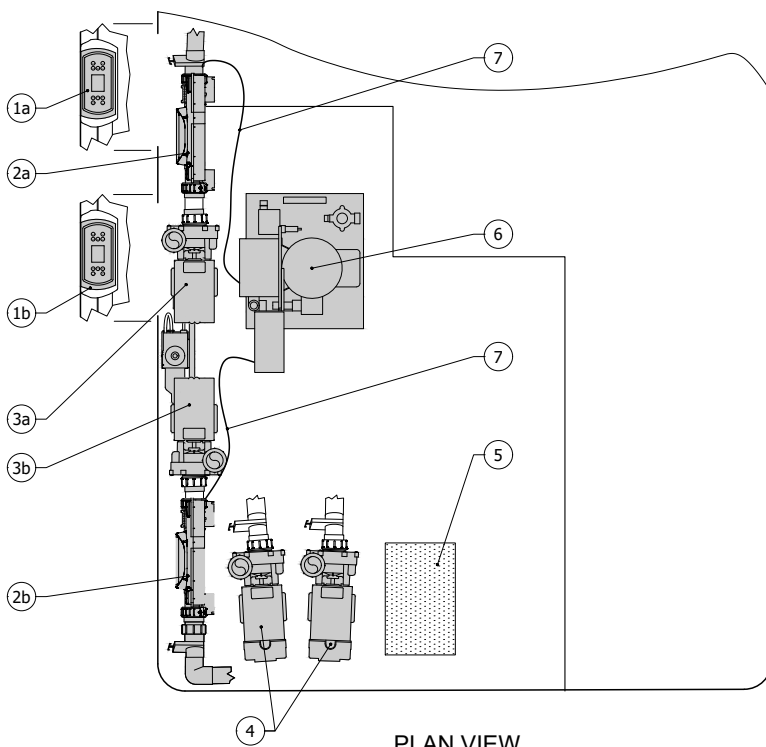
Part 2: When the AFS arrives: Remove the vertical T-spacer of the left skirting by removing the four screws using a 5/16" socket. Slide panel towards center until panel is no longer behind corner. *Disconnect the wiring harness attached to panel before pulling out panel.* While holding panel, first slide panel up, then pull bottom away.

Once inside the AFS skirted cabinet, locate the black painted plywood base and measure from the edges of the plywood for the centerline: for Stub-up 'A': 9" [23 cm] from the left side and 22 1/2"-30 1/2" [57-78 cm] from the Spa's end.

DETAIL NUMBER:

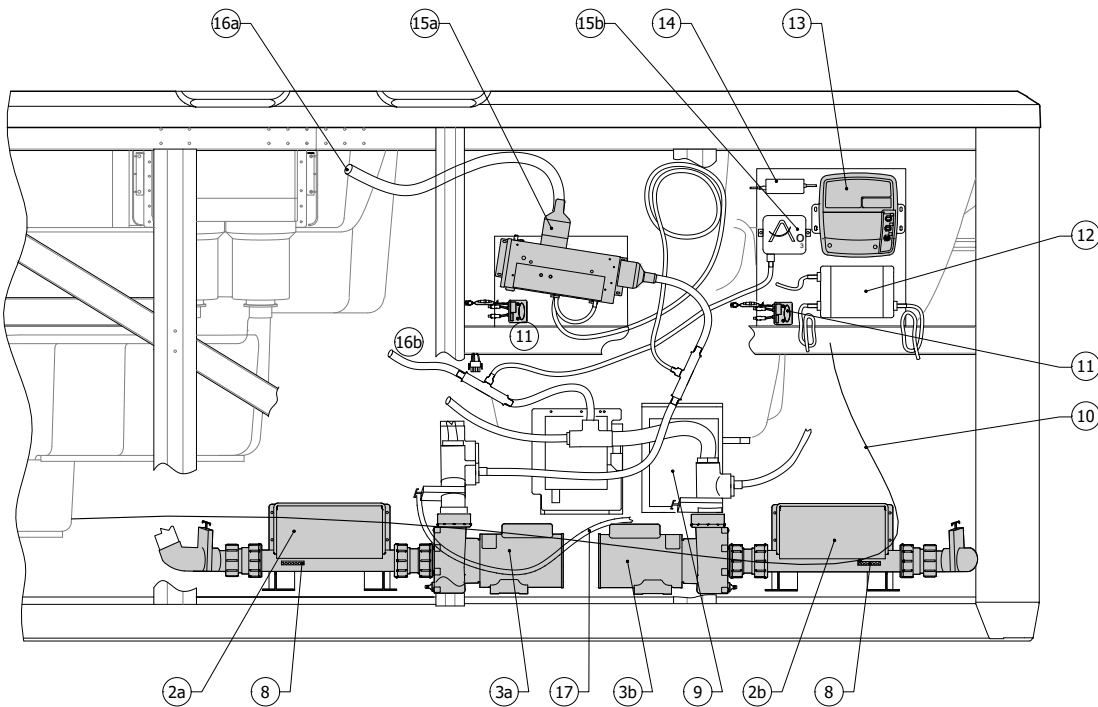
WM-18.4.2

REV: 2018/09/24



PLAN VIEW

- ①a KEYPAD CONTROL PANEL - SWIM SIDE
- ①b KEYPAD CONTROL PANEL - SPA SIDE
- ②a CONTROLLER/HEATER - SWIM SIDE
- ②b CONTROLLER/HEATER - SPA SIDE
- ③a CIRCULATION PUMP - SWIM SIDE
- ③b CIRCULATION PUMP - SPA SIDE
- ④ HYDROMASSAGE JETS PUMP
- ⑤ OPTIONAL AUDIO SUBWOOFER
- ⑥ HYDRAULIC POWER UNIT
(IF TREADMILL, TANDEM HPU)
- ⑦ POWER WIRE WHIP
- ⑧ BONDING TERMINAL
- ⑨ JUNCTION BOX
- ⑩ BONDING WIRE
- ⑪ LIGHT CONTROLLER
- ⑫ DUAL OUTPUT POWER SUPPLY
FOR EXTERNAL LIGHTS
- ⑬ OPTIONAL AUDIO BLUETOOTH AMPLIFIER
- ⑭ OPTIONAL IN-TOUCH SYSTEM POWER SUPPLY
- ⑮a UVC OZONE - SPA SIDE
- ⑮b UVC OZONE - SWIM SIDE
- ⑯a TO OZONE JET - SWIM SIDE
- ⑯b TO OZONE JET - SPA SIDE
- ⑰ WATER LINES



LEFT VIEW

