

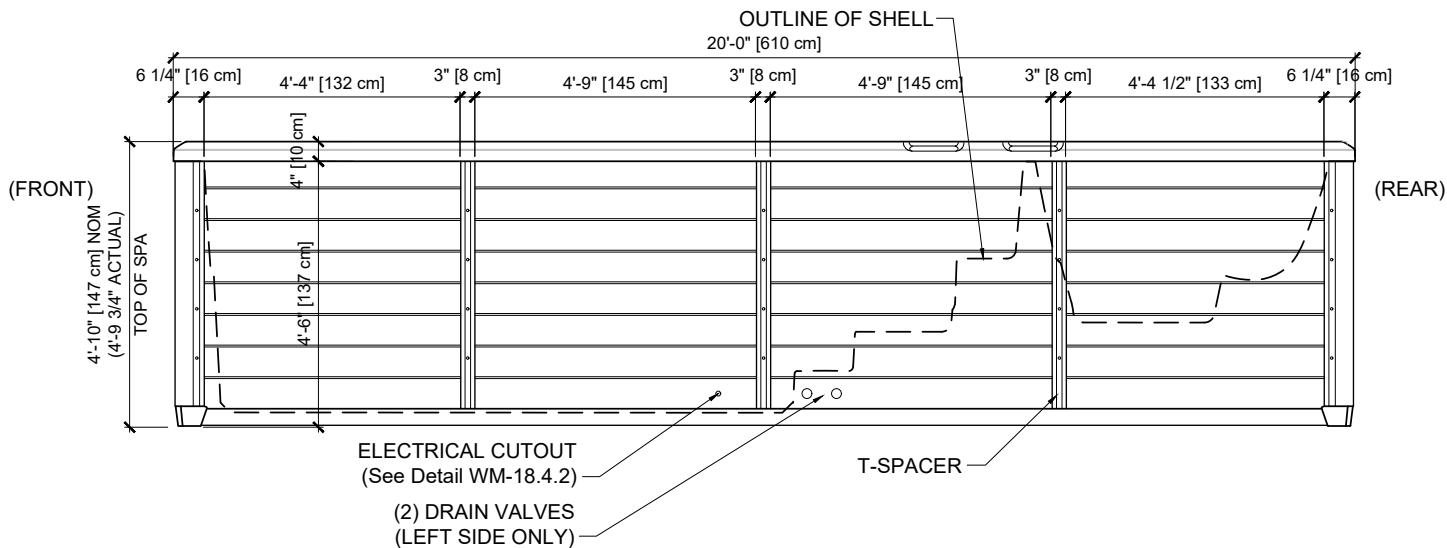
RIGHT ELEVATION

NOTE: 2'-0" [60 cm] ACCESS AROUND PERIMETER RECOMMENDED FOR SERVICE

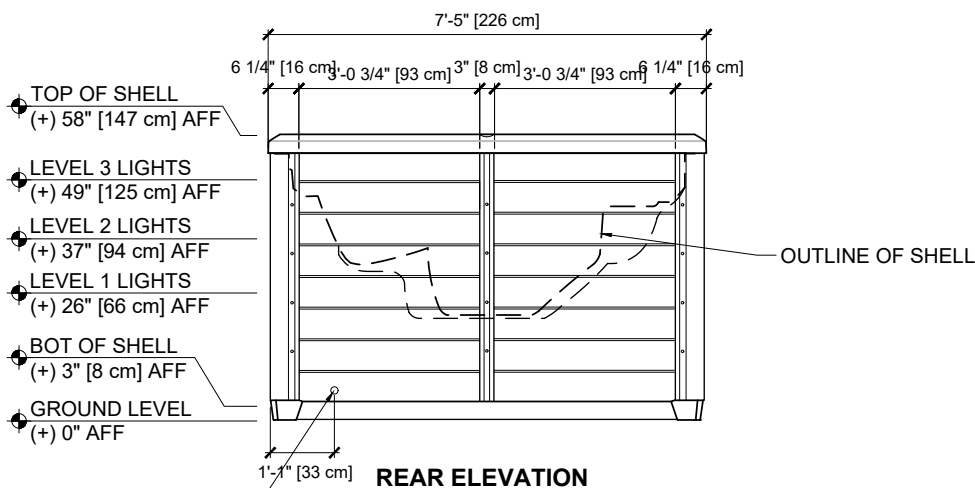


X2000 (58" Tall)
SwimCross™ Exercise System
General Information
 AQUATIC FITNESS SYSTEMS DETAILS

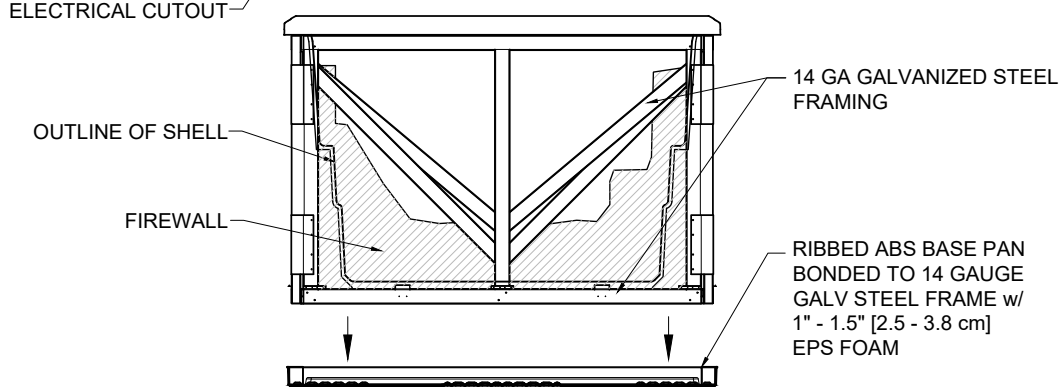
DETAIL NUMBER:
WM-18.0.9
 REV: 2019/01/09



LEFT ELEVATION

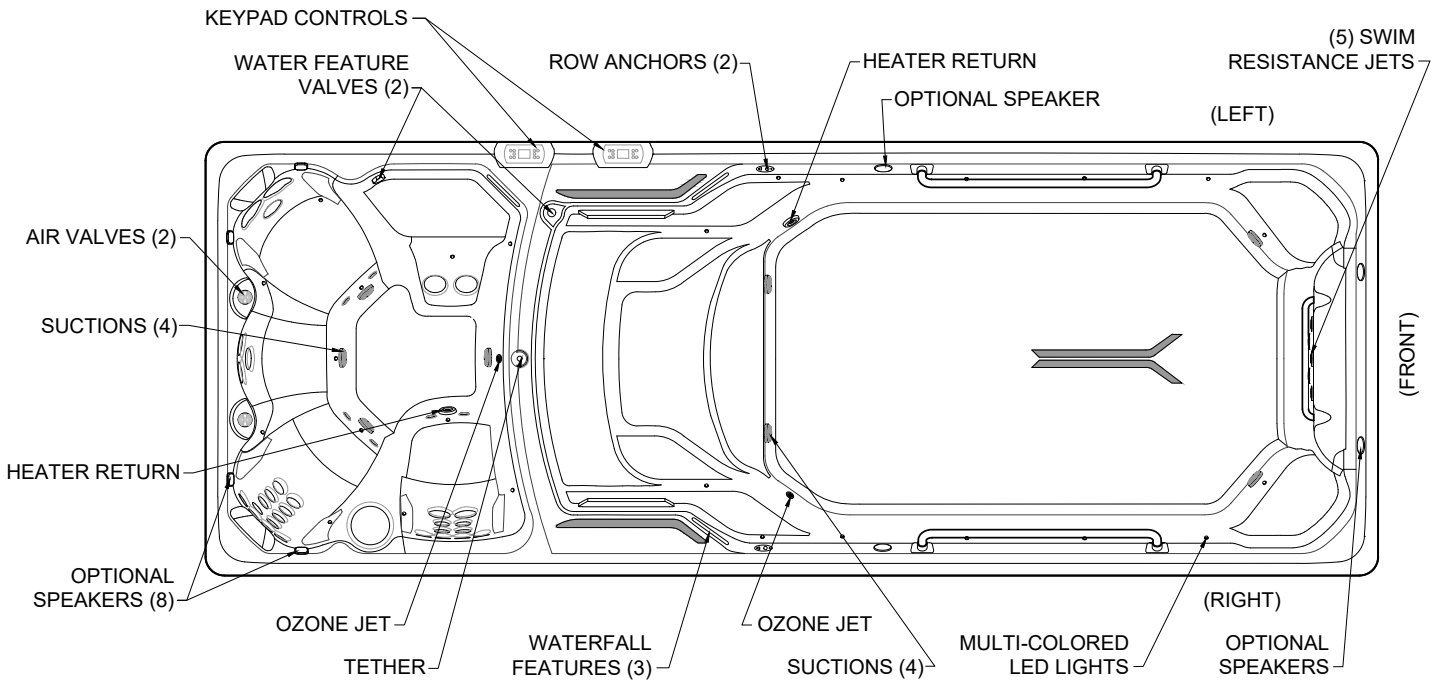


REAR ELEVATION

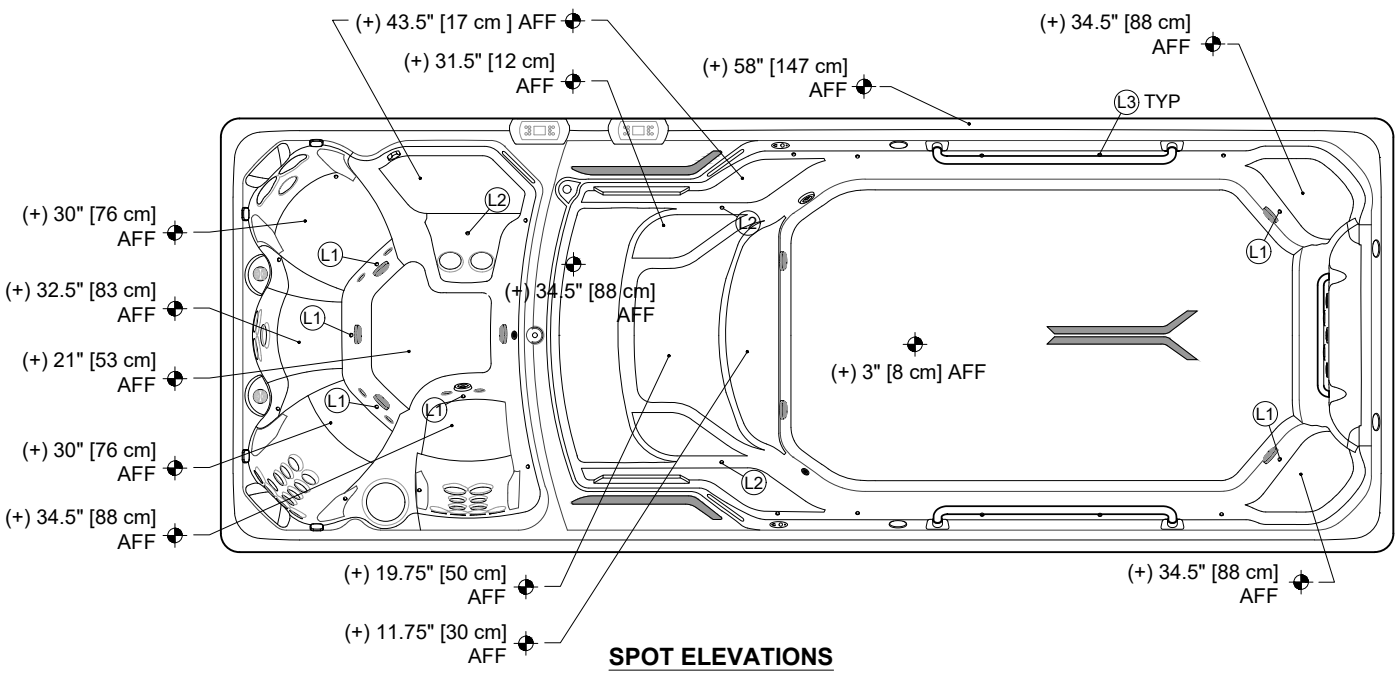


REAR SECTION

NOTE: 2'-0" [60 cm] ACCESS AROUND PERIMETER RECOMMENDED FOR SERVICE



SYSTEM PARTS



SPOT ELEVATIONS

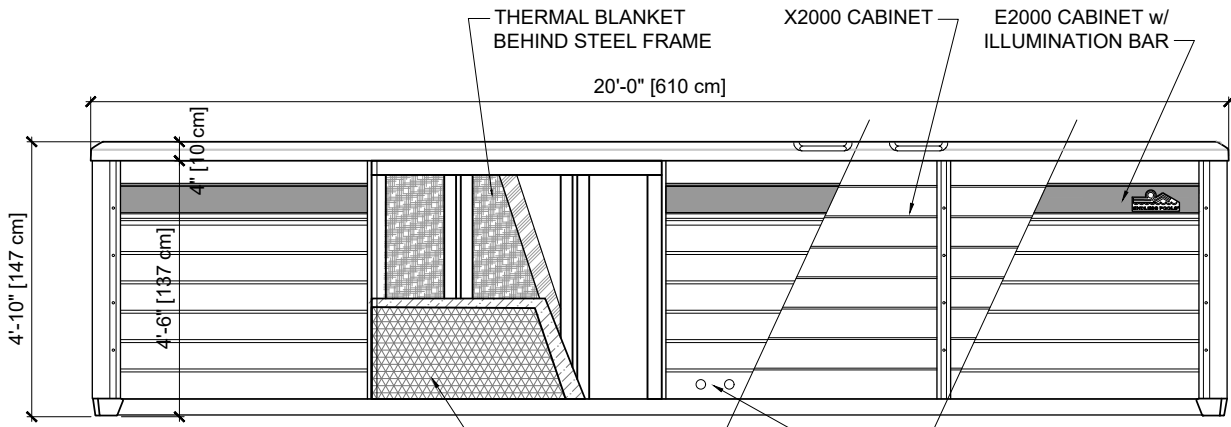
INTERNAL LIGHTS KEY*	
(L1)	= LEVEL 1 (+) 26" [66 cm] AFF
(L2)	= LEVEL 2 (+) 37" [94 cm] AFF
(L3)	= LEVEL 3 (+) 49" [125 cm] AFF

*AFF = ELEVATION ABOVE FINISH FLOOR

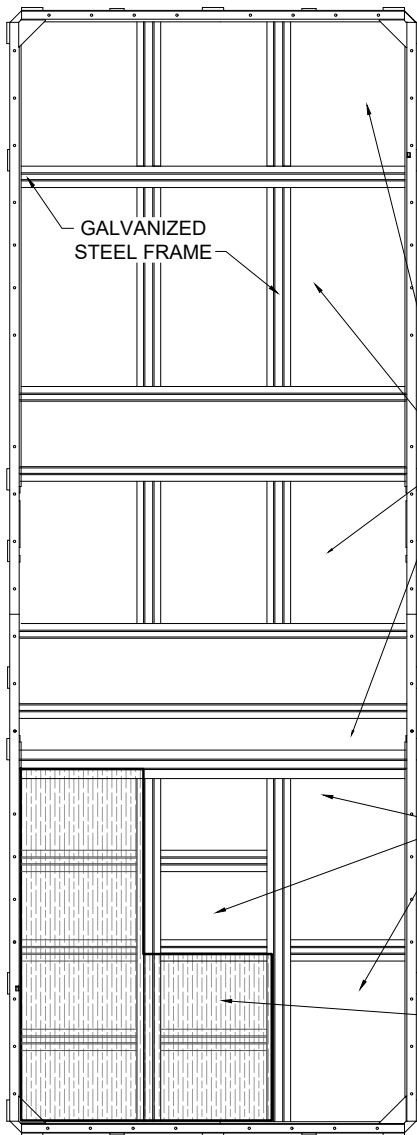


X2000 (58" Tall)
SwimCross™ Exercise System
Egress Details with Spot Elevations
 AQUATIC FITNESS SYSTEMS DETAILS

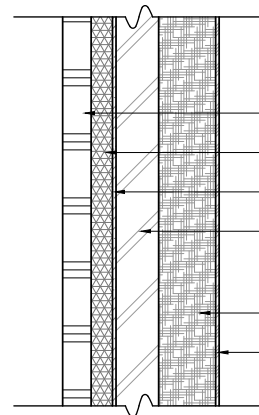
DETAIL NUMBER:
WM-18.2.5
 REV: 2019/01/04



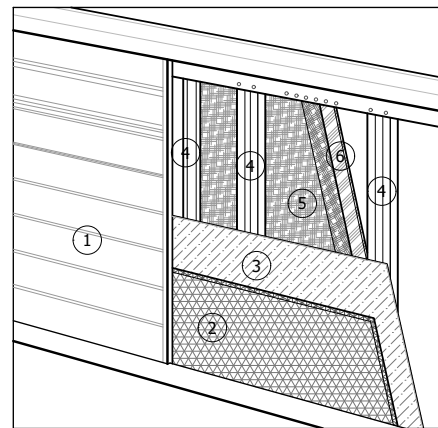
LEFT ELEVATION

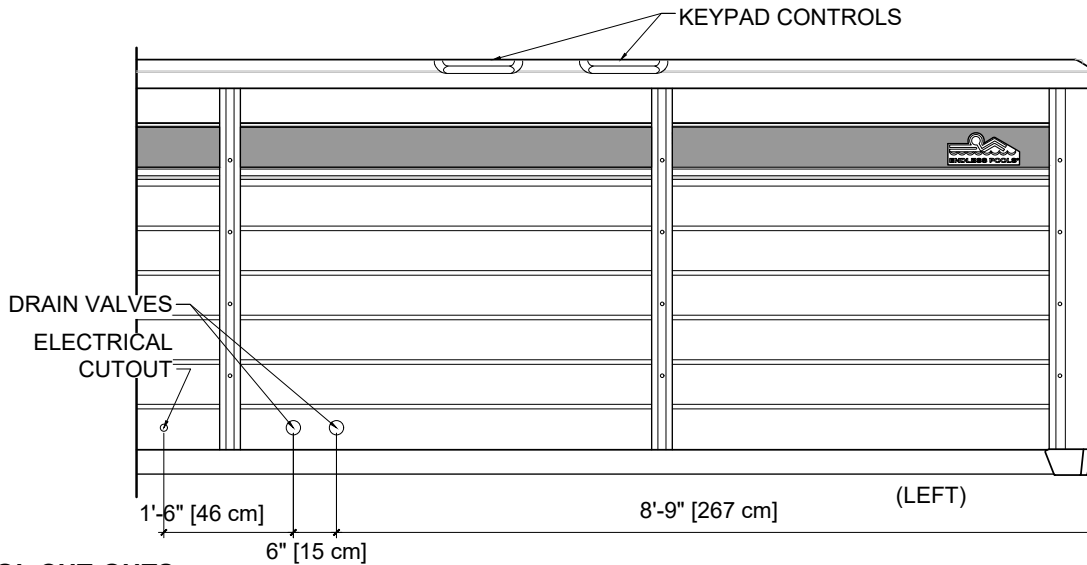


PLAN VIEW OF BASE

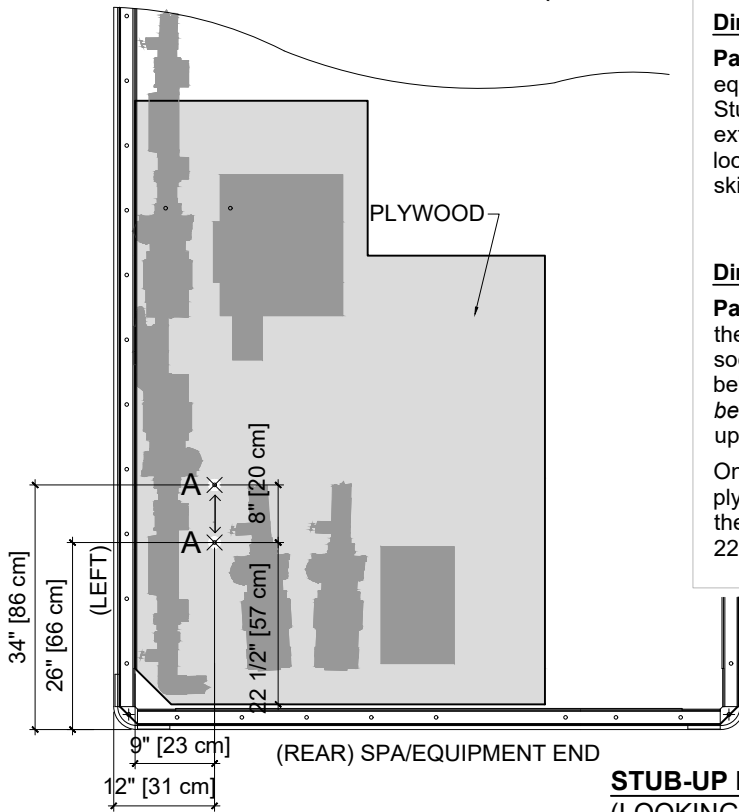
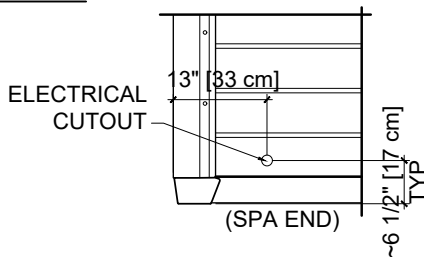


- ① SKIRTING PANEL
- ② 3/4" EPS FOAM (2 lbs density)
- ③ 1 mm REFLECTION FILM
- ④ GALVANIZED STEEL FRAME (HOT-DIPPED IN ZINC: COATED w/ MIN OF 0.9 oz ZINC PER SF)
- ⑤ 2" THERMAL HEAT BLANKET
- ⑥ 1 mm FOIL FILM





POOL CUT-OUTS



STUB-UP DETAIL
(LOOKING DOWN)

Stub-up Directions (Use a 2" [5 cm] Hole Saw)

Dimensions from Outside of Skirting:

Part 1: (See Stub-up Detail). The stub-up will be located in the equipment end (rear) under the jetted seats. The center line for Stub-up 'A' can be measured 12" [31 cm] from the skirting exterior on the left side of the Aquatic Fitness System (AFS) looking at Spa's Equipment End and 26-34" [66-86 cm] from the skirting exterior on the right looking at Spa's left side.

Dimensions from Inside of Cabinet:

Part 2: When the AFS arrives: Remove the vertical T-spacer of the left skirting by removing the four screws using a 5/16" socket. Slide panel towards center until panel is no longer behind corner. *Disconnect the wiring harness attached to panel before pulling out panel.* While holding panel, first slide panel up, then pull bottom away.

Once inside the AFS skirted cabinet, locate the black painted plywood base and measure from the edges of the plywood for the centerline: for Stub-up 'A': 9" [23 cm] from the left side and 22 1/2"-30 1/2" [57-78 cm] from the Spa's end.

DETAIL NUMBER:

WM-18.4.2

REV: 2018/09/24

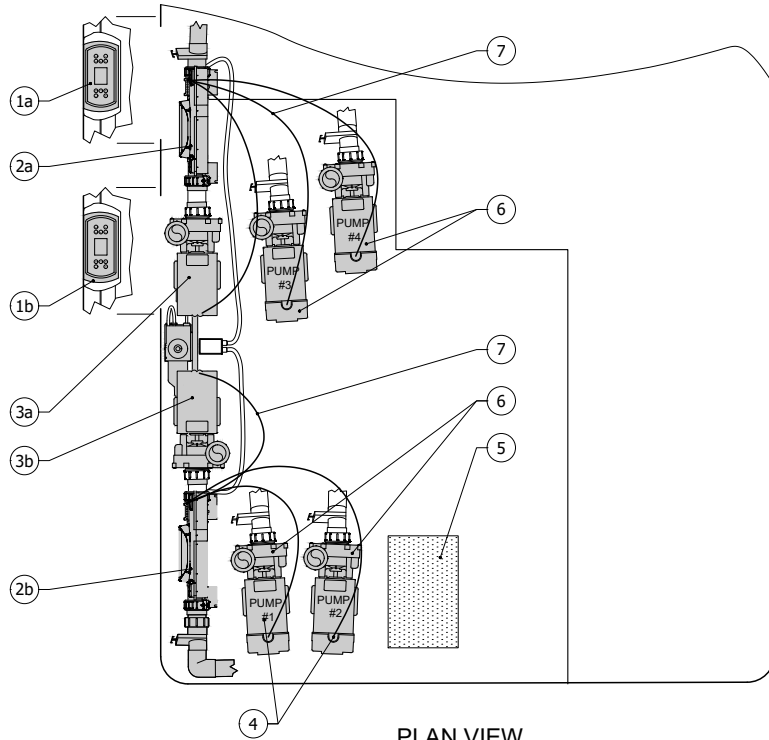


ENDLESS POOLS®
SWIMMING MACHINES
1601 Dutton Mill Road, Aston PA 19014
www.endlesspools.com
swim@endlesspools.com 800-732-8660

Electrical Supply Location Options

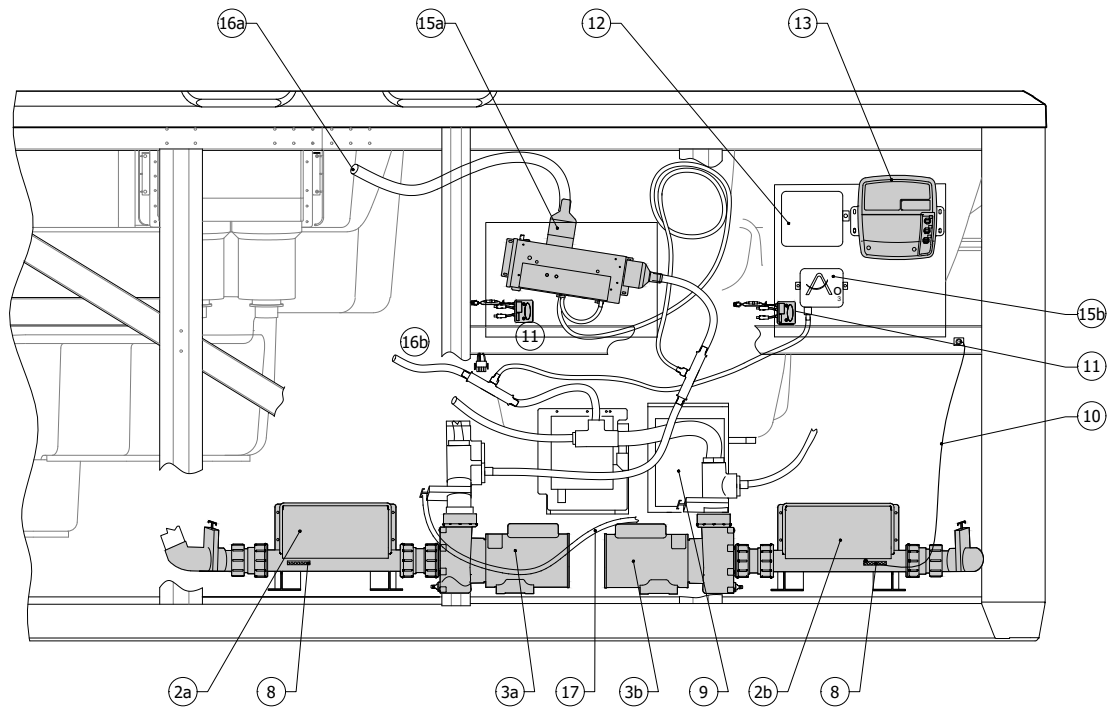
For E2000 & X2000

AQUATIC FITNESS SYSTEMS DETAILS



- 1a KEYPAD CONTROL PANEL - SWIM SIDE
- 1b KEYPAD CONTROL PANEL - SPA SIDE
- 2a CONTROLLER/HEATER - SWIM SIDE
- 2b CONTROLLER/HEATER - SPA SIDE
- 3a CIRCULATION PUMP - SWIM SIDE
- 3b CIRCULATION PUMP - SPA SIDE
- 4 HYDROMASSAGE JETS PUMP
- 5 OPTIONAL AUDIO SUBWOOFER
- 6 JET PUMPS
- 7 POWER WIRE WHIPS
- 8 BONDING TERMINAL
- 9 JUNCTION BOX
- 10 BONDING WIRE
- 11 LIGHT CONTROLLER
- 12 AFTER MARKET CHILLER INTERFACE UNIT
- 13 OPTIONAL AUDIO BLUETOOTH AMPLIFIER
- 14 OPTIONAL IN-TOUCH SYSTEM POWER SUPPLY
- 15a UVC OZONE - SPA SIDE
- 15b UVC OZONE - SWIM SIDE
- 16a TO OZONE JET - SWIM SIDE
- 16b TO OZONE JET - SPA SIDE
- 17 WATER LINES

PLAN VIEW



LEFT VIEW

