

# RESIDENTIAL BOARD

Fiberglass

## ASSEMBLY AND INSTALLATION INSTRUCTIONS

– PLEASE READ CAREFULLY –



### WESTERN SALES AND MANUFACTURING PLANT CORPORATE HEADQUARTERS

P.O. Box 400 • 1017 S.W. Berg Parkway  
Canby, Oregon 97013  
Phone (503) 266-2231 • Fax (503) 266-4334

### EASTERN MANUFACTURING PLANT

105 Challenger Drive  
Portland, Tennessee 37148  
Phone (615) 325-0770 • Fax (615) 325-0775

www.srsmith.com



## CAUTION

ALL MINIMUM WATER ENVELOPE DIMENSIONS FOR RESIDENTIAL INGROUND SWIMMING POOLS MUST MEET THE ANSI/APSP/ICC-5 2011 AMERICAN NATIONAL STANDARD FOR RESIDENTIAL INGROUND SWIMMING POOLS (REFERENCED THROUGHOUT THESE ASSEMBLY AND INSTALLATION INSTRUCTIONS AS "ANSI/APSP/ICC-5 2011"). COMPLY WITH LOCAL GOVERNMENT REGULATIONS IF THEY EXCEED ANSI/APSP/ICC STANDARDS.

All diving boards and related equipment are manufactured for inground swimming pools ONLY. The S.R. Smith Residential Diving Boards are designed to be easily transported and installed. Follow all instructions carefully and inspect closely to assure proper and safe installation.

PROPER INSTALLATION CANNOT BE OVERSTATED. IMPROPER INSTALLATION VOIDS S.R. SMITH'S WARRANTY AND MAY AFFECT THE SAFETY OF THE USER.

### FIBRE-DIVE • FRONTIER III • GLAS-HIDE

6', 8', 10' & 12'

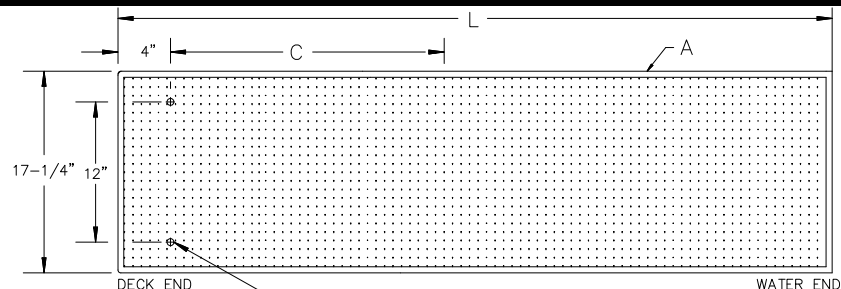


FIG. 1

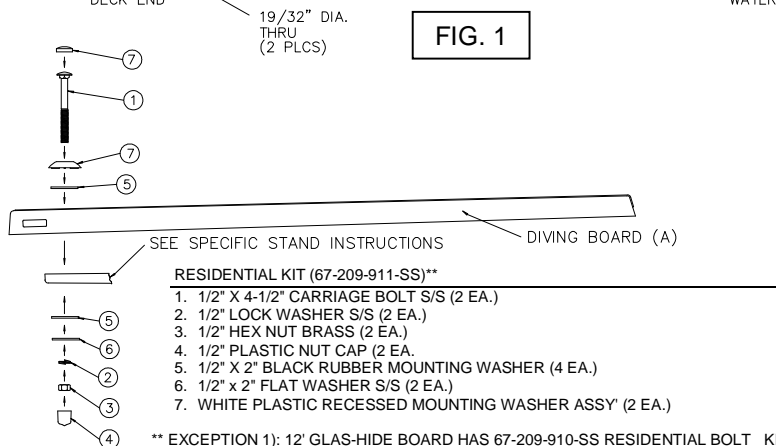


FIG. 2

#### RESIDENTIAL KIT (67-209-911-SS)\*\*

1. 1/2" X 4-1/2" CARRIAGE BOLT S/S (2 EA.)
2. 1/2" LOCK WASHER S/S (2 EA.)
3. 1/2" HEX NUT BRASS (2 EA.)
4. 1/2" PLASTIC NUT CAP (2 EA.)
5. 1/2" X 2" BLACK RUBBER MOUNTING WASHER (4 EA.)
6. 1/2" X 2" FLAT WASHER S/S (2 EA.)
7. WHITE PLASTIC RECESSED MOUNTING WASHER ASSY (2 EA.)

\*\* EXCEPTION 1): 12' GLAS-HIDE BOARD HAS 67-209-910-SS RESIDENTIAL BOLT KIT W/5" BOLT: 1. 1/2" X 5" CARRIAGE BOLT S/S (2EA)

EXCEPTION 2): SALT STAND REQUIRES 3-1/2" CARRIAGE BOLTS FOUND IN 69-209-125 SALT BASE SPRING HARDWARE KIT: 1. 1/2" X 3-1/2" CARRIAGE BOLT S/S (2 EA)

### INSTALLATION INSTRUCTIONS

CONCRETE DECK AROUND JIG MUST BE 6" THICK MINIMUM.

1. READ THE FOLLOWING INSTRUCTIONS CAREFULLY and pages 1 through 8 of Selected Sections from American National Standard for Residential Inground Swimming Pools ANSI/APSP/ICC-5 2011, provided with the diving board, paying particular attention to Figure 3 and Table 1.
2. THE DIVING BOARD WARRANTY WILL BE VOID if the correct measurement between the mounting holes and the fulcrum is not maintained when mounting a diving board to a newly installed stand.
3. THE DIVING BOARD WARRANTY WILL BE VOID if the rubber fulcrum pad is not used.

#### FULCRUM SETTING CHART

Refer to Fig. 1

Model RESIDENTIAL	Board A	Fulcrum Setting C	Actual Length L
FIBRE-DIVE	6'	30" ± 3"	70-1/2"
FRONTIER II			
FRONTIER III			
GLAS-HIDE			

1. The Rubber Fulcrum Pad MUST be used so as not to void S.R. Smith's warranty.

Tighten hex nuts until lock washer is fully compressed. DO NOT OVERTIGHTEN. **IMPORTANT NOTICE: IT IS NECESSARY TO USE AN ANTI-SEIZE THREAD COMPOUND ON ALL STAINLESS STEEL HARDWARE. FAILURE TO USE ANTI-SEIZE COMPOUND MAY RESULT IN GALLING AND SEIZING OF THE HARDWARE.**

ONLY ONE PERSON ON A DIVING BOARD AT A TIME, WITH A MAXIMUM WEIGHT OF 250 LBS.

ATTENTION: THESE INSTRUCTIONS MUST REMAIN WITH OWNER OF BOARD