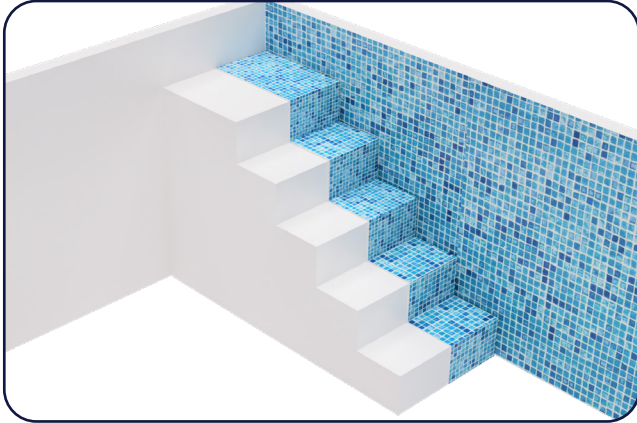


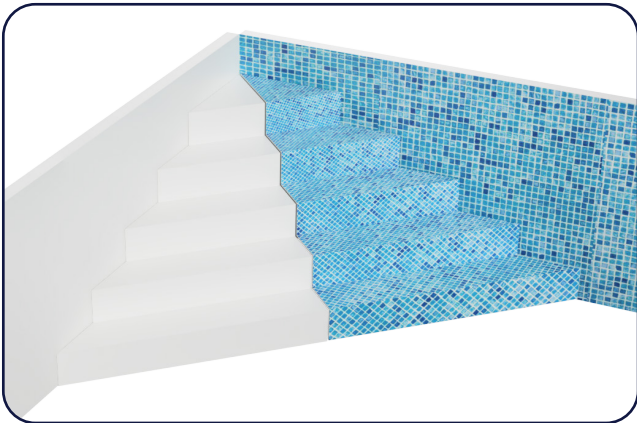
New Internal Steps For Liner Pools



AT A GLANCE..

HeatForm® steps are designed to fit tight against two walls of the pool, creating a sleek and modern finish to any liner pool.

Available in two sizes, 1.2m high to suit 1.5m high walls and 0.9m high to suit 1.2m walls.

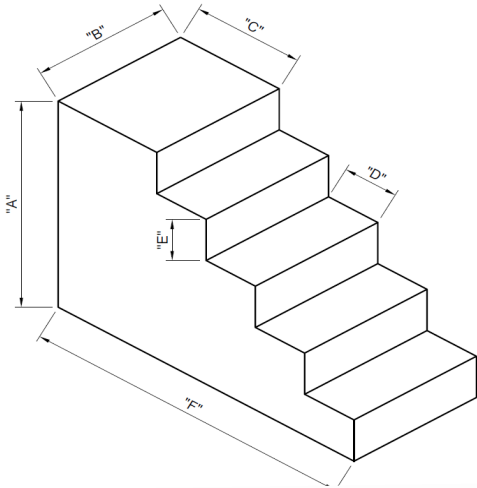


PRODUCT BENEFITS

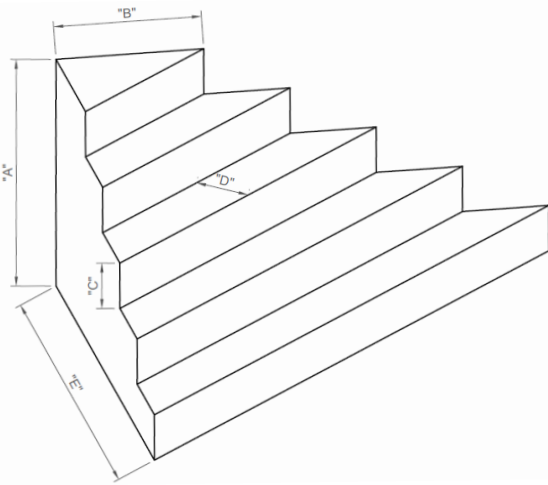
- Insulated with 100% recycled PET plastic
- Easy to install / maintain
- Reduces install time
- Reduces install cost
- More accessible than traditional methods
- Stock held for fast turnaround of orders

Distributed exclusively in the UK by :

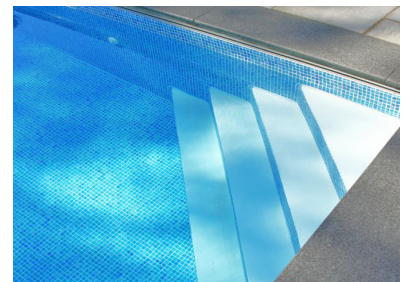
TECHNICAL INFORMATION



Straight Units	1.5m Walls	1.2m Walls
"A" Unit	1200 mm	900 mm
"B" Width	750 mm	750 mm
"C" Top Step (L)	600 mm	600 mm
"D" Tread Depth	300 mm	300 mm
"E" Riser Height	240 mm	240 mm
"F" Unit Length	1800mm	1500 mm



Corner Units	1.5m Walls	1.2m Walls
"A" Height	1200 mm	900 mm
"B" Top Step (L)	727 mm	727 mm
"C" Riser Height	240 mm	240 mm
"D" Tread Depth	300 mm	300 mm
"E" Unit Length	2424 mm	2000 mm



Distributed exclusively in the UK by :