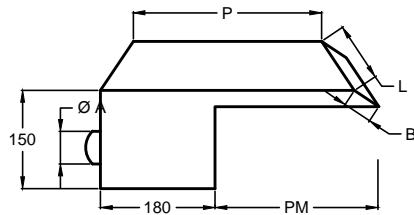
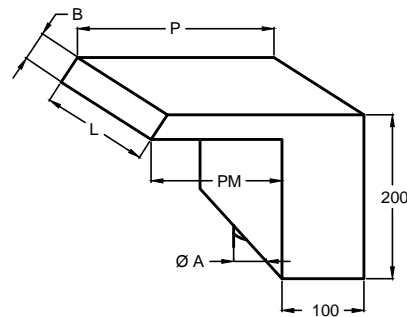


FONTANE A CASCATA (da inserire nella muratura)

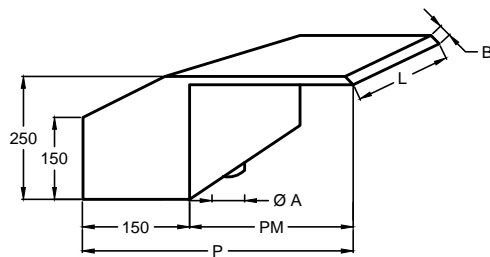
DECORATIVE FALL FOUNTAINS (to insert into the concrete)



TIPO ORIZZONTALE
HORIZONTAL TYPE



TIPO VERTICALE STRETTA
VERTICAL TIGHT TYPE



TIPO VERTICALE STANDARD
VERTICAL STANDARD TYPE

TIPO - TYPE		COD.	L	P	PM	B	Ø A	PORTATA RANGE
			mm	mm	mm	mm	mm	mm
ORIZZONTALE HORIZONTAL	OR 33	73 101	330	460	280	8	1 1/2" F	10 mc/h
	OR 50	73 102	500	500	320	8	2" F	15 mc/h
	OR 75	73 103	750	500	320	8	2" F	22 mc/h
	OR 100	73 104	1000	500	320	8	2 1/2" F	30 mc/h
VERT. STANDARD VERTICAL STANDARD	VA 33	73 105	330	430	280	8	1 1/2" F	10 mc/h
	VA 50	73 106	500	470	320	8	2" F	15 mc/h
	VA 75	73 107	750	470	320	8	2" F	22 mc/h
	VA 100	73 108	1000	470	320	8	2 1/2" F	30 mc/h
VERTICALE STRETTA VERTICAL TIGHT	VB 20	73 109	200	200	100	8	1 1/2" F	8 mc/h
	VB 30	73 110	300	250	150	8	1 1/2" F	10 mc/h
	VB 40	73 111	400	350	250	8	1 1/2" F	12 mc/h
	VB 50	73 112	500	400	300	8	2" F	15 mc/h

COSTRUITA IN ACCIAIO INOX AISI 316 L - V4 A

DECAPAGGIO ESTERNO

MANUFACTURED WITH AISI 316 L - V4 A STAINLESS STEEL

EXTERNALLY PICKLING