



# Winter Debris Covers

**Certikin**  
FLUIDRA

# Winter Debris Covers

## An essential part of any outdoor pool care programme

Designed to keep debris out, but let rain water through, Certikin's high quality winter debris covers are used on thousands of pools worldwide.

Manufactured by Certikin in the UK from the highest quality woven polyethylene fabrics, covers can be made to suit almost any size, shape and location of pool, from above ground timber pools to free-form shapes. By using the latest options in CAD and automated fabric cutting and marking to provide accuracy and speed, combined with decades of experience in manufacturing such covers, we firmly believe we offer the best winter debris covers on the market.

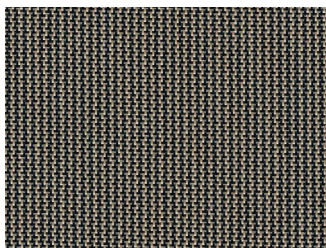
- Available in an attractive forest green, blue, tan or grey
- Covers should be ordered to allow for a 300mm (1') overlap around the full perimeter. When ordering please add 600mm (2') to each dimension
- Covers are invoiced in metric to the actual sq/metre finished size
- Supplied in a box together with a storage bag
- Free-form covers are made to the dimensions and drawings supplied at the time of order and will be charged using the largest measurements of the pool
- Strap spacing is approximately 1.2-1.6m apart, and straps are 1m long as standard. Closer spacing and longer straps are available. Please call with your requirements
- For extra protection against wear, a tough PVC skirt can be added to any cover.
- The Maple range are made with regular perimeter straps, which are secured to the pool surround by polished stainless steel springs and pins. Alternatively our Criss-Cross range offers straps which run the full length and width of the cover for extra strength – which are secured in the same way



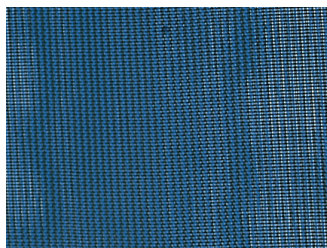
Grey WDC. Image courtesy of Azure Pools



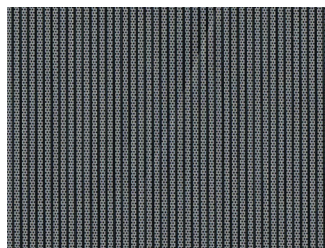
Tan WDC. Image courtesy of Safe-T-First, Cyprus



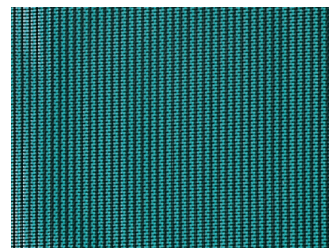
Tan



Blue



Grey



Green



## Winter Debris Covers - Automated Design & Cutting

Certikin North's manufacturing equipment and software capabilities have allowed the expansion of both the design and cutting of the winter debris covers. The software is used to convert the supplied dimensions into a cutting pattern for a cover which includes all necessary overlaps and seam, as well as pre-marked strap positioning. The ability to visualise and position straps at the design stage allows for a more accurate strap placement, thus generating better tensioning of the cover all around. Incorporating steps, ladder or rail cut outs is easily achieved and we are able to create free-form shapes from supplied dimensions to suit any shaped pool. With the exception of covers created from a supplied template, all new winter debris covers are now manufactured using this new automated system.

## Above Ground Pools

Certikin above ground winter covers are ideal for timber pools. Covers can be manufactured from the same materials as standard debris covers and can be made to almost any size and shape; ladder entry points can also be included. Our standard design allows the cover to fold 50mm over the edge of the timber frame, but other preferences of sizing can be accommodated if specified at point of order. The perimeter of the cover incorporates a tough 25mm webbing through which eyelets are secured. For each eyelet an elasticated ball loop and stainless steel hook is provided (see image opposite) to allow the cover to be tensioned and secured over the pool (basic fixing screws are provided for each hook, but screws may not be suitable for all pools). Available in all colours.

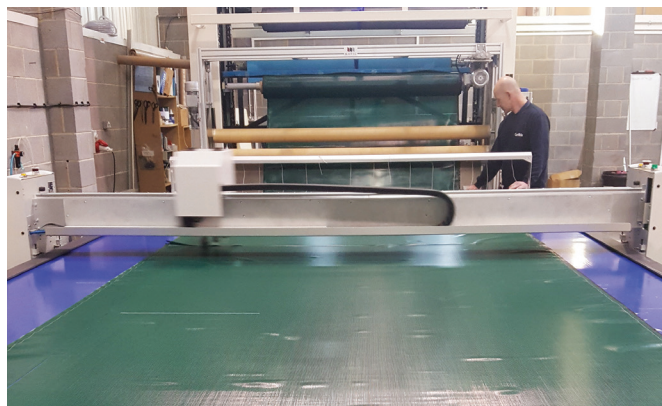
## Low Profile Fixings

As well as the above options, we also offer a range of low profile fixings to suit either a concrete or timber deck surround. Please call with your requirements.

### Repairs

Certikin is able to undertake repairs on an existing winter cover. However, priority will be given to new cover manufacture during September and October. Therefore we are unable to repair any covers during this time.

- Please return covers for repair before 1st August
- In advance of making any returns please obtain a reference number
- Springs and other fixings should be removed before returning the cover
- We reserve the right to refuse work on any cover deemed to be un-hygienic



Certikin North's manufacturing equipment



WDC for timber above ground pools



Grey WDC with ladder cut-out. Image courtesy of Safe-T-First, Cyprus

# Certikin

## FLUIDRA

Unit 9, Witan Park, Avenue 2, Station Lane Industrial Estate, Witney, Oxfordshire, OX28 4FJ, United Kingdom  
Email: [info@certikin.co.uk](mailto:info@certikin.co.uk)

[www.certikin.co.uk](http://www.certikin.co.uk)



Contact your Certikin stockist for prices and availability.

This literature is intended as a guide.  
The company reserves the right to change the specifications without notice.