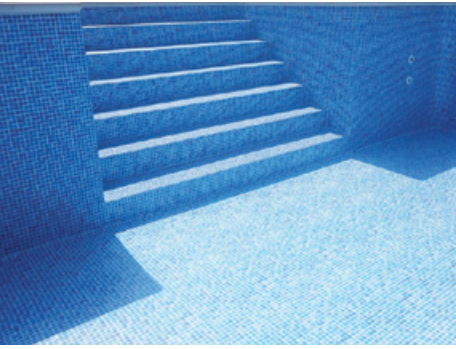
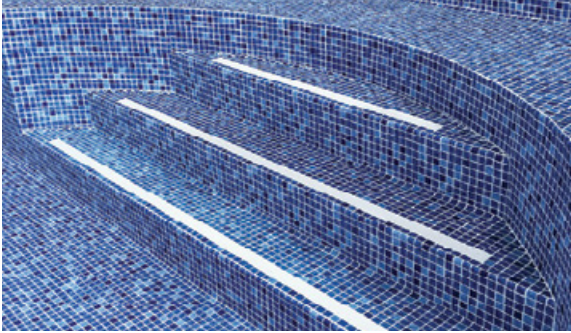


**Certikin**  
*brings water to life*

## Swimming Pool Lining



## INFINITE ON-SITE POOL LINING



**15 YEAR  
GUARANTEE**

### *Infinite On-Site Lining*

Certikin's Infinite On-Site Lining service continues to go from strength to strength, both in terms of level of service and installation ability to the depth of quality in the materials we use.

Now firmly established in this market, Certikin's ability to install a liner into almost any pool and any environment speaks for itself, with a very wide variety of installations successfully completed, from basic balance tanks, to standard and complex domestic pools through to full commercial size installations.

Our material range continues to advance and is of the highest quality. Our supply partners are some of the finest PVC manufacturers in the world and continue to excel themselves in terms of development and quality standards. All materials sourced are certified for use in domestic and commercial applications, being KSW and CE certified – they meet all current European requirements for swimming pool installation – and in particular, all of our anti-slip membranes, plain colour or printed, are manufactured to DIN EN 51097 Cat C standards.

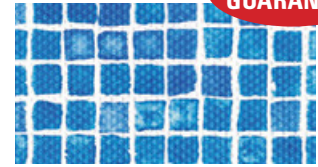
The choice of colours and patterns includes all of the classics, but also includes new and adventurous options such as our exclusive Silver Black Tile, Royal Mosaic and Oceanstone. We have also developed our range of patterned anti-slip membranes so that our French Mosaic, Royal Mosaic, all three Cyrus Mosaics and our Oceanstone design, have a complementary and matching anti-slip membrane in order to offer an all over tiled effect finish.

### *Product Features:*

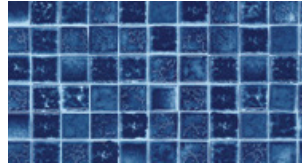
- Installed by Certikin
- 15 year pro-rata guarantee at pool temps of up to 90°F (32°C).
- Fully certified materials – suitable for any installation.
- High quality printing with a multiple lacquered protective surface – offering the highest stain, discolouration and abrasion resistance.
- UV Stabilised – acceleration chamber tested.
- Ideal for both new and refurbished pools (including concrete, cement render, steel, aluminium, timber and fibreglass) – note: fittings must be liner fittings.
- 1.5mm or 1.6mm PVC with polyester internal mesh.
- Anti-slip PVC for steps and walk in slopes.
- Anti-microbially equipped.
- Tear resistant.
- Installed with 50mm overlap seams – sealed with colour co-ordinated or translucent liquid PVC.
- Anchor points made with stainless steel expanding drive rivets.
- Can be hung from standard liner-lock or from specifically installed metal profile.
- Geo-textile underlay available and recommended.
- Easily repairable if damaged.
- Suitable for domestic and commercial applications.



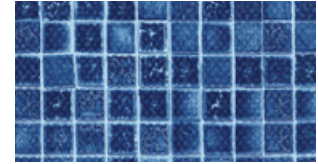
French Mosaic



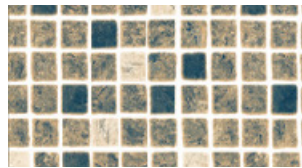
French Mosaic Anti-Slip



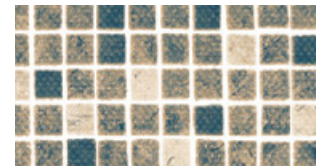
Royal Mosaic



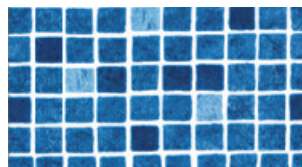
Royal Mosaic Anti-Slip



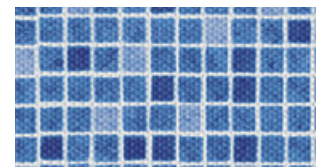
Cyrus Sand



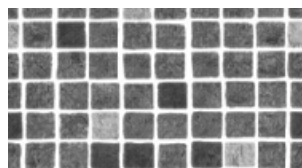
Cyrus Sand Anti-Slip



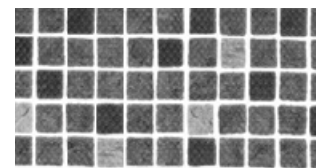
Cyrus Blue



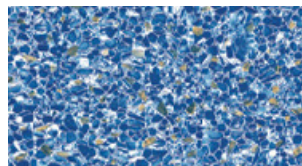
Cyrus Blue Anti-Slip



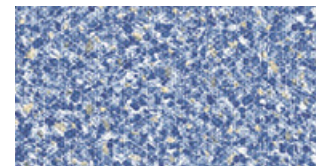
Cyrus Grey



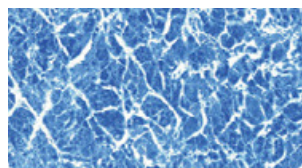
Cyrus Grey Anti-Slip



Oceanstone (WSL)



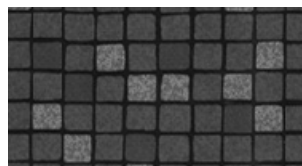
Oceanstone Anti-Slip (WSL)



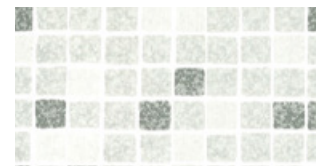
Blue Marble



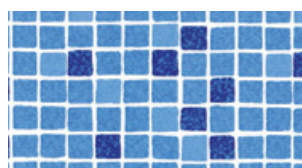
Crystal Mosaic



Silver Black Tile



Grey Tile



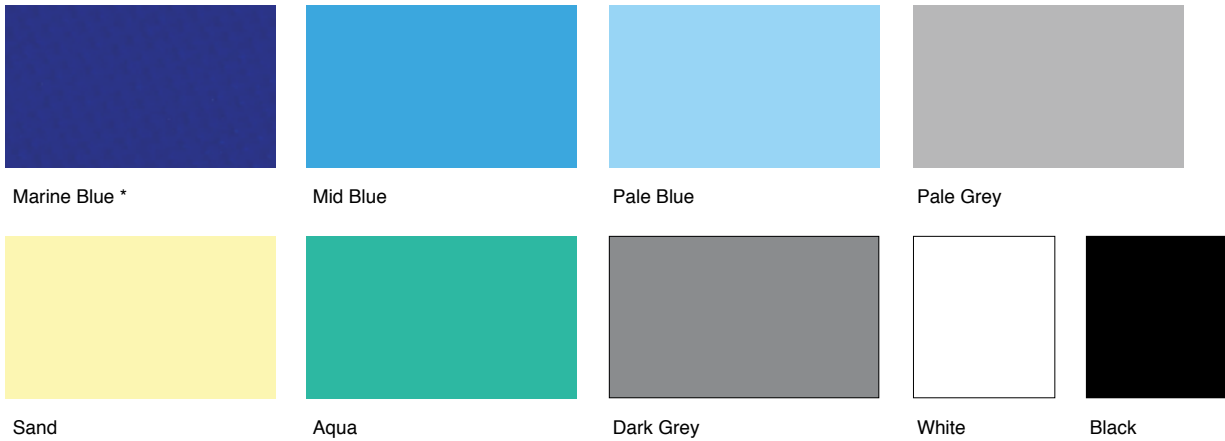
Blue Tile

### Plain Colours Options

Plain, solid colours are ideal for creating an all over crisp finish. They can be combined with patterns around the perimeter, walls and floor if desired to create contrast and differentiation. Whilst solid colours are clean and even, they can highlight unevenness in the pool shell in some instances.

Our extensive range of colours offers the widest choice and the highest quality. Our exclusive Marine Blue colour offers a pleasing variant to the traditional blues and greens, giving a unique look when under water. All plain colours, **with the exception of Marine Blue\***, are available in matching anti-slip variants – these can be used to complement the all over colour of your liner, or mixed with patterns and other colours to create areas of contrast on step treads, slopes, ledges and other safety areas.

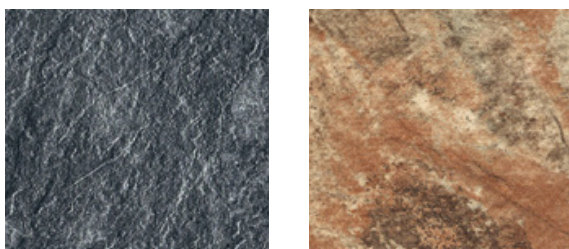
Our full range is available to view in our free of charge sample swatches. Please contact Certikin North for provision of these and other lining samples.



### Touch Range (Special Order)

The Touch range of vinyl has been designed to offer a simulation of a variety of natural stone effects, both in appearance and texture. By combining high quality and thicker than standard (2.0mm as opposed to 1.5mm) vinyl with the latest design and manufacturing technology which incorporates printing, embossing and engraving, each of the unique designs offers both aesthetic beauty and a pleasant and surprising touch.

The texture of the Authentic, Relax and the new Vanity designs allows them to be certified as an anti-slip product to Cat C of the required DIN standard, and the Elegance design has its own complementary anti-slip option which also meets the standard. All Touch vinyls are ultimately protected by the Alkorplan 3000 multi-layer lacquering system for maximum protection within the pool environment.



Elegance

Authentic



Vanity



Relax

### Island Dreams - NEW

Inspired by the textures and stunning looks of some of the most beautiful beaches in the world. From the tranquil sands of Capri and Bali, to the darker tones of Hawaii and Tahiti. Designed with differing textures (which comply with all anti-slip standards) and carefully selected colouring, this pool lining system offers all the benefits of a traditional on-site lining installation with the addition of such a unique look. The vinyl is manufactured to full swimming pool grade standard and as such can be used in the same range of installation possibilities as any other on-site lining vinyl. The anti-slip nature of the Island Dreams range means that it can be used on all surfaces, including steps and slopes, and complementary liquid PVC is used for sealing each seam.

